



POTEC mouse mAb

Catalog No	BYmab-12051
Isotype	IgG
Reactivity	Human;Rat;Mouse;
Applications	WB
Gene Name	POTEC A26B2 POTE18
Protein Name	POTEC
Immunogen	Synthesized peptide derived from human POTEC AA range: 265-315
Specificity	This antibody detects endogenous levels of POTEC at Human
Formulation	Liquid in PBS containing 50% glycerol, 0.5% BSA and 0.02% sodium azide.
Source	Monoclonal, Mouse,IgG
Purification	The antibody was affinity-purified from mouse antiserum by affinity-chromatography using epitope-specific immunogen.
Dilution	WB 1:500-2000
Concentration	1 mg/ml
Purity	≥90%
Storage Stability	-20°C/1 year
Synonyms	
Observed Band	
Cell Pathway	
Tissue Specificity	Expressed in prostate and testis.
Function	similarity:Belongs to the POTE family.,similarity:Contains 6 ANK repeats.,similarity:Contains 7 ANK repeats.,tissue specificity:Expressed in prostate and testis.,tissue specificity:Expressed in prostate, ovary, testis, placenta and prostate cancer cell lines. Localizes to basal and terminal prostate epithelial cells.,
Background	
matters needing attention	Avoid repeated freezing and thawing!

Nanjing BYabscience technology Co.,Ltd

网址: www.njbybio.com

官方热线: 025-5229-8998

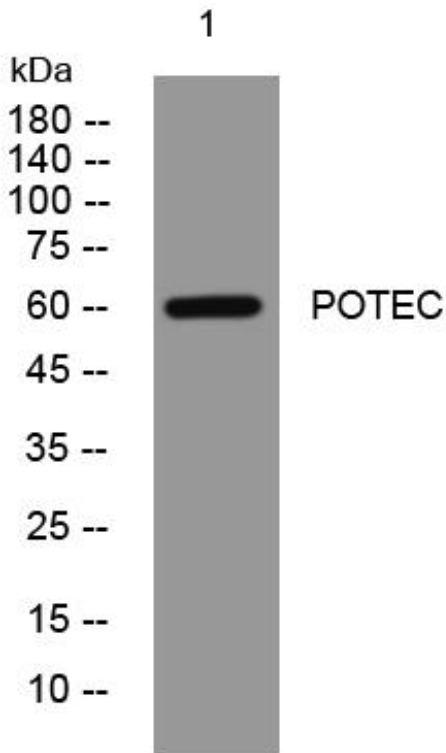
监督电话: 15950492658



Usage suggestions

This product can be used in immunological reaction related experiments. For more information, please consult technical personnel.

Products Images



Western Blot analysis of various cells using POTEC mouse mAb

Nanjing BYabscience technology Co.,Ltd

网址: www.njbybio.com

官方热线: 025-5229-8998

监督电话: 15950492658