



DJC21 mouse mAb

Catalog No	BYmab-12045
Isotype	IgG
Reactivity	Human;Rat;Mouse;
Applications	WB
Gene Name	DNAJC21 DNAJA5
Protein Name	DJC21
Immunogen	Synthesized peptide derived from human DJC21 AA range: 255-305
Specificity	This antibody detects endogenous levels of DJC21 at Human
Formulation	Liquid in PBS containing 50% glycerol, 0.5% BSA and 0.02% sodium azide.
Source	Monoclonal, Mouse,IgG
Purification	The antibody was affinity-purified from mouse antiserum by affinity-chromatography using epitope-specific immunogen.
Dilution	WB 1:500-2000
Concentration	1 mg/ml
Purity	≥90%
Storage Stability	-20°C/1 year
Synonyms	
Observed Band	
Cell Pathway	Cytoplasm . Nucleus . Nucleus, nucleolus . Within the nucleus, localizes primarily to the nucleolus. .
Tissue Specificity	Expressed in brain, placenta, kidney and pancreas.
Function	function:May act as a co-chaperone for HSP70.,similarity:Contains 1 J domain.,similarity:Contains 2 C2H2-type zinc fingers.,tissue specificity:Brain, placenta, kidney and pancreas.,
Background	
matters needing attention	Avoid repeated freezing and thawing!

Nanjing BYabscience technology Co.,Ltd

网址: www.njbybio.com

官方热线: 025-5229-8998

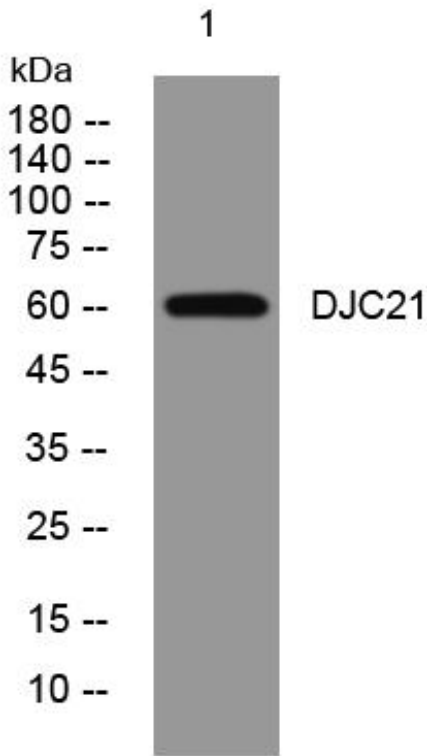
监督电话: 15950492658



Usage suggestions

This product can be used in immunological reaction related experiments. For more information, please consult technical personnel.

Products Images



Western Blot analysis of various cells using DJC21 mouse mAb

Nanjing BYabs science technology Co.,Ltd

网址: www.njbybio.com

官方热线: 025-5229-8998

监督电话: 15950492658