



# LMCD1 mouse mAb

Catalog No	BYmab-12043
Isotype	IgG
Reactivity	Human; Mouse
Applications	WB
Gene Name	LMCD1
Protein Name	LMCD1
Immunogen	Synthesized peptide derived from human LMCD1 AA range: 270-320
Specificity	This antibody detects endogenous levels of LMCD1 at Human/Mouse
Formulation	Liquid in PBS containing 50% glycerol, 0.5% BSA and 0.02% sodium azide.
Source	Monoclonal, Mouse,IgG
Purification	The antibody was affinity-purified from mouse antiserum by affinity-chromatography using epitope-specific immunogen.
Dilution	WB 1:500-2000
Concentration	1 mg/ml
Purity	≥90%
Storage Stability	-20°C/1 year
Synonyms	
Observed Band	
Cell Pathway	Cytoplasm . Nucleus . May shuttle between the cytoplasm and the nucleus. .
Tissue Specificity	Expressed in the heart (at protein level). Expressed in many tissues with highest abundance in skeletal muscle.
Function	similarity:Contains 1 PET domain.,similarity:Contains 2 LIM zinc-binding domains.,subunit:Interacts with beta-dystroglycan.,tissue specificity:Expressed in many tissues with highest abundance in skeletal muscle.,
Background	This gene encodes a member of the LIM-domain family of zinc finger proteins. The encoded protein contains an N-terminal cysteine-rich domain and two C-terminal LIM domains. The presence of LIM domains suggests involvement in protein-protein interactions. The protein may act as a co-regulator of transcription along with other transcription factors. Alternate splicing results in multiple transcript variants of this gene. [provided by RefSeq, May 2013],

Nanjing BYabscience technology Co.,Ltd



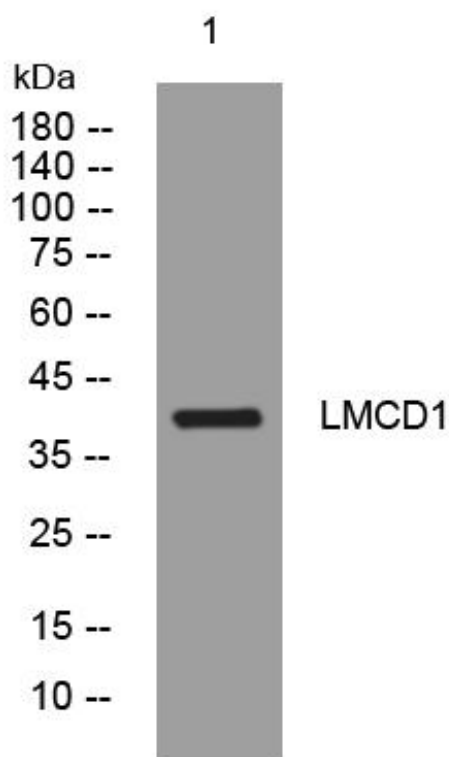
**matters needing attention**

Avoid repeated freezing and thawing!

**Usage suggestions**

This product can be used in immunological reaction related experiments. For more information, please consult technical personnel.

## Products Images



Western Blot analysis of various cells using LMCD1 mouse mAb