



BIN3 mouse mAb

Catalog No	BYmab-12012
Isotype	IgG
Reactivity	Human; Mouse;Rat
Applications	WB
Gene Name	BIN3
Protein Name	BIN3
Immunogen	Synthesized peptide derived from human BIN3 AA range: 184-234
Specificity	This antibody detects endogenous levels of BIN3 at Human/Mouse/Rat
Formulation	Liquid in PBS containing 50% glycerol, 0.5% BSA and 0.02% sodium azide.
Source	Monoclonal, Mouse,IgG
Purification	The antibody was affinity-purified from mouse antiserum by affinity-chromatography using epitope-specific immunogen.
Dilution	WB 1:500-2000
Concentration	1 mg/ml
Purity	≥90%
Storage Stability	-20°C/1 year
Synonyms	
Observed Band	
Cell Pathway	Cytoplasm, cytoskeleton.
Tissue Specificity	Ubiquitously expressed except in brain.
Function	function:Involved in cytokinesis and septation where it has a role in the localization of F-actin.,similarity:Contains 1 BAR domain.,tissue specificity:Ubiquitously expressed except in brain.,
Background	The product of this gene is a member of the BAR domain protein family. The encoded protein is comprised solely of a BAR domain which is predicted to form coiled-coil structures and proposed to mediate dimerization, sense and induce membrane curvature, and bind small GTPases. BAR domain proteins have been implicated in endocytosis, intracellular transport, and a diverse set of other processes. [provided by RefSeq, Jul 2008],

Nanjing BYabscience technology Co.,Ltd

网址: www.njbybio.com

官方热线: 025-5229-8998

监督电话: 15950492658



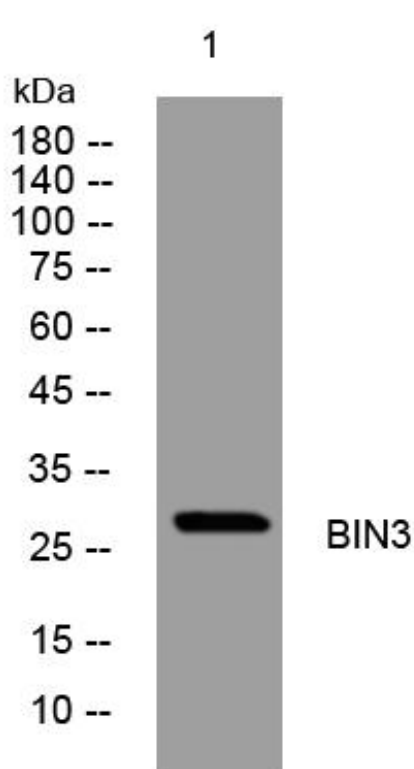
matters needing attention

Avoid repeated freezing and thawing!

Usage suggestions

This product can be used in immunological reaction related experiments. For more information, please consult technical personnel.

Products Images



Western Blot analysis of various cells using BIN3 mouse mAb