



SLTM mouse mAb

Catalog No	BYmab-11998
Isotype	IgG
Reactivity	Human; Mouse
Applications	WB
Gene Name	SLTM MET
Protein Name	SLTM
Immunogen	Synthesized peptide derived from human SLTM AA range: 562-612
Specificity	This antibody detects endogenous levels of SLTM at Human/Mouse
Formulation	Liquid in PBS containing 50% glycerol, 0.5% BSA and 0.02% sodium azide.
Source	Monoclonal, Mouse,IgG
Purification	The antibody was affinity-purified from mouse antiserum by affinity-chromatography using epitope-specific immunogen.
Dilution	WB 1:500-2000
Concentration	1 mg/ml
Purity	≥90%
Storage Stability	-20°C/1 year
Synonyms	
Observed Band	
Cell Pathway	Nucleus . Detected in punctate structures. .
Tissue Specificity	
Function	function:When overexpressed, acts as a general inhibitor of transcription that eventually leads to apoptosis.,PTM:Phosphorylated upon DNA damage, probably by ATM or ATR.,sequence caution:Contaminating sequence. Potential poly-A sequence.,sequence caution:Translation N-terminally extended.,similarity:Contains 1 RRM (RNA recognition motif) domain.,similarity:Contains 1 SAP domain.,subcellular location:Detected in punctate structures.,
Background	

Nanjing BYabscience technology Co.,Ltd

网址: www.njbybio.com

官方热线: 025-5229-8998

监督电话: 15950492658



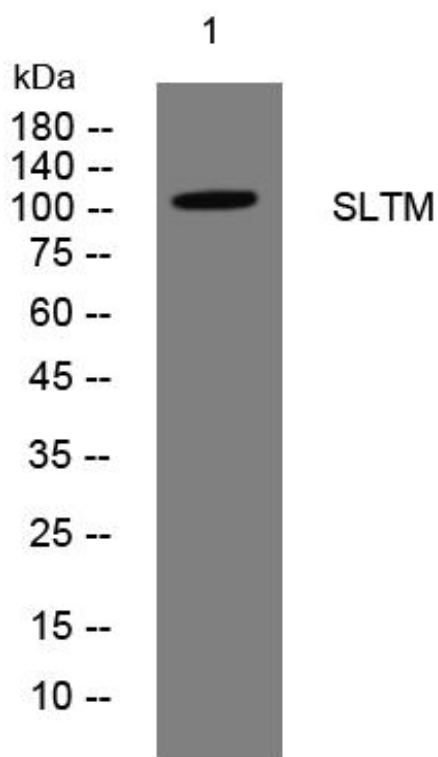
matters needing attention

Avoid repeated freezing and thawing!

Usage suggestions

This product can be used in immunological reaction related experiments. For more information, please consult technical personnel.

Products Images



Western Blot analysis of various cells using SLTM mouse mAb