



# BTBD9 mouse mAb

<b>Catalog No</b>	BYmab-11992
<b>Isotype</b>	IgG
<b>Reactivity</b>	Human; Mouse;Rat
<b>Applications</b>	WB
<b>Gene Name</b>	BTBD9 KIAA1880
<b>Protein Name</b>	BTBD9
<b>Immunogen</b>	Synthesized peptide derived from human BTBD9 AA range: 424-474
<b>Specificity</b>	This antibody detects endogenous levels of BTBD9 at Human/Mouse/Rat
<b>Formulation</b>	Liquid in PBS containing 50% glycerol, 0.5% BSA and 0.02% sodium azide.
<b>Source</b>	Monoclonal, Mouse,IgG
<b>Purification</b>	The antibody was affinity-purified from mouse antiserum by affinity-chromatography using epitope-specific immunogen.
<b>Dilution</b>	WB 1:500-2000
<b>Concentration</b>	1 mg/ml
<b>Purity</b>	≥90%
<b>Storage Stability</b>	-20°C/1 year
<b>Synonyms</b>	
<b>Observed Band</b>	
<b>Cell Pathway</b>	cytoplasm,SCF ubiquitin ligase complex,
<b>Tissue Specificity</b>	Detected in the brain (at protein level) (PubMed:22658601). Moderately expressed in all specific brain regions examined (PubMed:11572484). Expressed in the dopaminergic neurons of the substantia nigra and A11 neurons (PubMed:22658601). Highly expressed in kidney and moderately expressed in all other adult and fetal tissues (PubMed:11572484).
<b>Function</b>	disease:Genetic variations in BTBD9 are associated with susceptibility to restless legs syndrome type 6 (RLS6) [MIM:611185]; also called periodic limb movements in sleep. Restless legs syndrome (RLS) is a neurologic disorder characterized by an uncontrollable urge to move the legs during periods of rest. The majority of patients with RLS also have periodic limb movements in sleep, which are characterized by involuntary, highly stereotypical, regularly occurring limb movements that occur during sleep.,similarity:Contains 1 BACK (BTB/Kelch associated) domain.,similarity:Contains 1 BTB (POZ) domain.,tissue specificity:Highly expressed in kidney and moderately expressed in all other adult

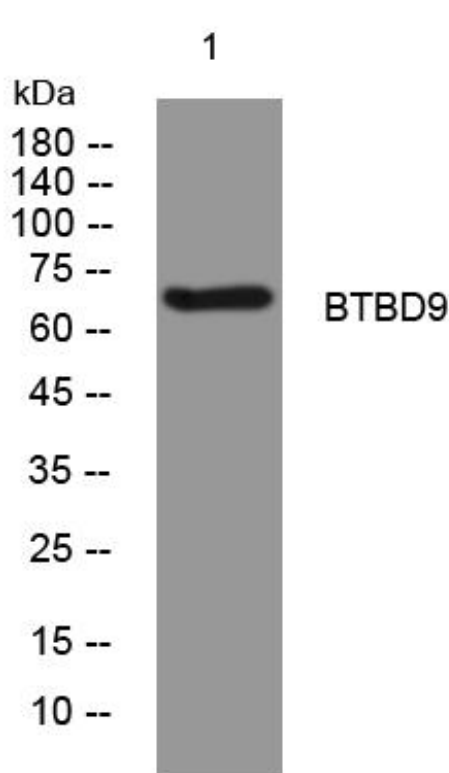
**Nanjing BYabscience technology Co.,Ltd**



and fetal tissues. Moderately expressed in all specific brain regions examined.,

<b>Background</b>	This locus encodes a BTB/POZ domain-containing protein. This domain is known to be involved in protein-protein interactions. Polymorphisms at this locus have been reported to be associated with susceptibility to Restless Legs Syndrome and may also be associated with Tourette Syndrome. Alternatively spliced transcript variants have been described. [provided by RefSeq, Aug 2011],
<b>matters needing attention</b>	Avoid repeated freezing and thawing!
<b>Usage suggestions</b>	This product can be used in immunological reaction related experiments. For more information, please consult technical personnel.

## Products Images



Western Blot analysis of various cells using BTBD9 mouse mAb