



SHF mouse mAb

Catalog No	BYmab-11986
Isotype	IgG
Reactivity	Human; Mouse
Applications	WB
Gene Name	SHF
Protein Name	SHF
Immunogen	Synthesized peptide derived from human SHF AA range: 163-213
Specificity	This antibody detects endogenous levels of SHF at Human/Mouse
Formulation	Liquid in PBS containing 50% glycerol, 0.5% BSA and 0.02% sodium azide.
Source	Monoclonal, Mouse,IgG
Purification	The antibody was affinity-purified from mouse antiserum by affinity-chromatography using epitope-specific immunogen.
Dilution	WB 1:500-2000
Concentration	1 mg/ml
Purity	≥90%
Storage Stability	-20°C/1 year
Synonyms	
Observed Band	
Cell Pathway	
Tissue Specificity	Expressed in skeletal muscle, brain, liver, prostate, testis, ovary, small intestine and colon.
Function	function:Adapter protein which may play a role in the regulation of apoptosis in response to PDGF.,PTM:May become phosphorylated upon binding to PDGFRA.,similarity:Contains 1 SH2 domain.,subunit:Interacts with phosphorylated 'Tyr-720' of PDGFRA via its SH2 domain.,tissue specificity:Expressed in skeletal muscle, brain, liver, prostate, testis, ovary, small intestine and colon.,
Background	
matters needing attention	Avoid repeated freezing and thawing!

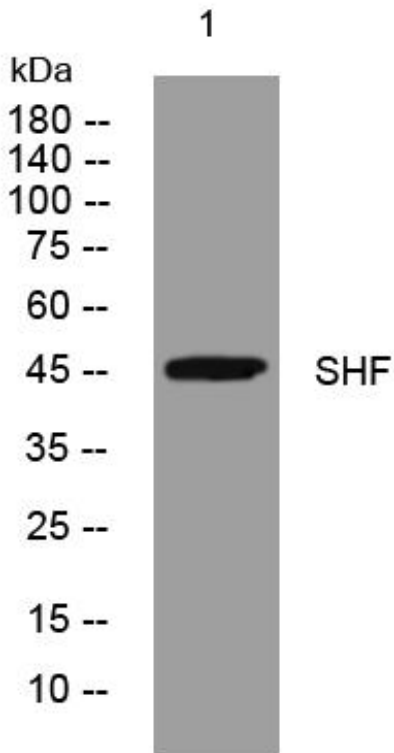
Nanjing BYabscience technology Co.,Ltd



Usage suggestions

This product can be used in immunological reaction related experiments. For more information, please consult technical personnel.

Products Images



Western Blot analysis of various cells using SHF mouse mAb

Nanjing BYabs science technology Co.,Ltd

网址: www.njbybio.com

官方热线: 025-5229-8998

监督电话: 15950492658