



RHG36 mouse mAb

Catalog No	BYmab-11977
Isotype	IgG
Reactivity	Human; Mouse
Applications	WB
Gene Name	ARHGAP36
Protein Name	RHG36
Immunogen	Synthesized peptide derived from human RHG36 AA range: 281-331
Specificity	This antibody detects endogenous levels of RHG36 at Human/Mouse
Formulation	Liquid in PBS containing 50% glycerol, 0.5% BSA and 0.02% sodium azide.
Source	Monoclonal, Mouse,IgG
Purification	The antibody was affinity-purified from mouse antiserum by affinity-chromatography using epitope-specific immunogen.
Dilution	WB 1:500-2000
Concentration	1 mg/ml
Purity	≥90%
Storage Stability	-20°C/1 year
Synonyms	
Observed Band	
Cell Pathway	cytosol,
Tissue Specificity	
Function	function:GTPase activator for the Rho-type GTPases by converting them to an inactive GDP-bound state.,similarity:Contains 1 Rho-GAP domain.,
Background	
matters needing attention	Avoid repeated freezing and thawing!
Usage suggestions	This product can be used in immunological reaction related experiments. For more information, please consult technical personnel.

Nanjing BYabscience technology Co.,Ltd

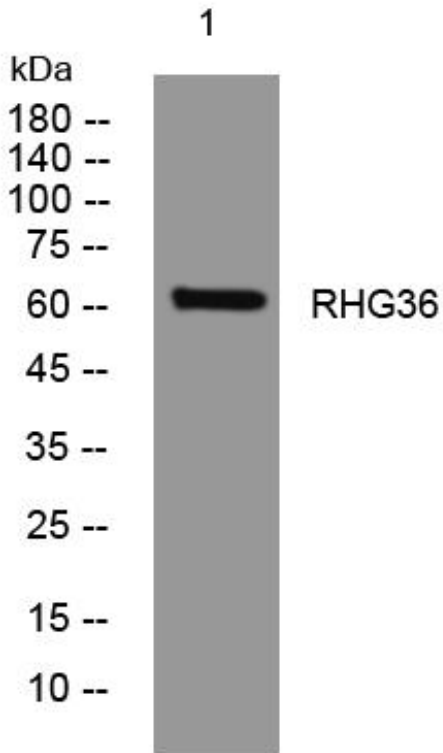
网址: www.njbybio.com

官方热线: 025-5229-8998

监督电话: 15950492658



Products Images



Western Blot analysis of various cells using RHG36 mouse mAb