



SAHH3 mouse mAb

Catalog No	BYmab-11969
Isotype	IgG
Reactivity	Human; Mouse
Applications	WB
Gene Name	AHCYL2 KIAA0828
Protein Name	SAHH3
Immunogen	Synthesized peptide derived from human SAHH3 AA range: 157-207
Specificity	This antibody detects endogenous levels of SAHH3 at Human/Mouse
Formulation	Liquid in PBS containing 50% glycerol, 0.5% BSA and 0.02% sodium azide.
Source	Monoclonal, Mouse,IgG
Purification	The antibody was affinity-purified from mouse antiserum by affinity-chromatography using epitope-specific immunogen.
Dilution	WB 1:500-2000
Concentration	1 mg/ml
Purity	≥90%
Storage Stability	-20°C/1 year
Synonyms	
Observed Band	
Cell Pathway	Cytoplasm . Microsome . Associates with membranes when phosphorylated, probably through interaction with ITPR1. .
Tissue Specificity	
Function	catalytic activity:S-adenosyl-L-homocysteine + H(2)O = L-homocysteine + adenosine.,cofactor:Binds 1 NAD per subunit.,cofactor:NAD.,pathway:Amino-acid biosynthesis; homocysteine biosynthesis; L-homocysteine from S-adenosyl-L-homocysteine: step 1/1.,similarity:Belongs to the adenosylhomocysteinase family.,
Background	The protein encoded by this gene acts as a homotetramer and may be involved in the conversion of S-adenosyl-L-homocysteine to L-homocysteine and adenosine. Several transcript variants encoding different isoforms have been found for this gene. [provided by RefSeq, Jun 2011],

Nanjing BYabscience technology Co.,Ltd

网址: www.njbybio.com

官方热线: 025-5229-8998

监督电话: 15950492658



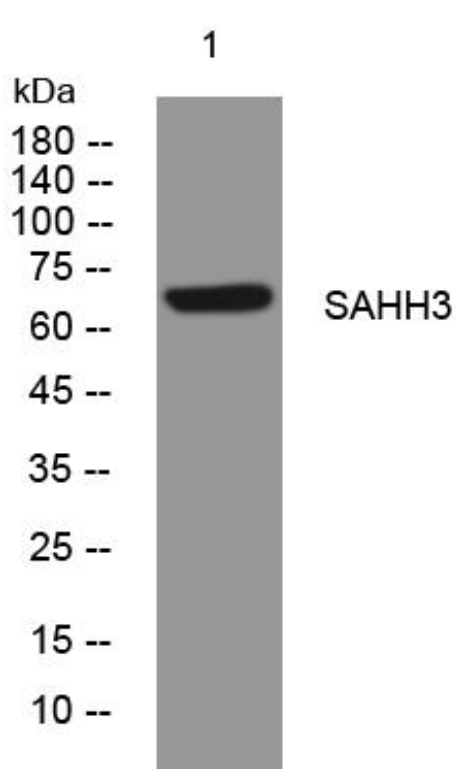
matters needing attention

Avoid repeated freezing and thawing!

Usage suggestions

This product can be used in immunological reaction related experiments. For more information, please consult technical personnel.

Products Images



Western Blot analysis of various cells using SAHH3 mouse mAb