



# PSDE mouse mAb

<b>Catalog No</b>	BYmab-11968
<b>Isotype</b>	IgG
<b>Reactivity</b>	Human; Mouse
<b>Applications</b>	WB
<b>Gene Name</b>	PSMD14 POH1
<b>Protein Name</b>	PSDE
<b>Immunogen</b>	Synthesized peptide derived from human PSDE AA range: 152-202
<b>Specificity</b>	This antibody detects endogenous levels of PSDE at Human/Mouse
<b>Formulation</b>	Liquid in PBS containing 50% glycerol, 0.5% BSA and 0.02% sodium azide.
<b>Source</b>	Monoclonal, Mouse,IgG
<b>Purification</b>	The antibody was affinity-purified from mouse antiserum by affinity-chromatography using epitope-specific immunogen.
<b>Dilution</b>	WB 1:500-2000
<b>Concentration</b>	1 mg/ml
<b>Purity</b>	≥90%
<b>Storage Stability</b>	-20°C/1 year
<b>Synonyms</b>	
<b>Observed Band</b>	
<b>Cell Pathway</b>	proteasome complex,nucleus,nucleoplasm,cytosol,proteasome regulatory particle, lid subcomplex,proteasome accessory complex,cytosolic proteasome complex,extracellular exosome,
<b>Tissue Specificity</b>	Widely expressed. Highest levels in heart and skeletal muscle.
<b>Function</b>	catalytic activity:Ubiquitin C-terminal thioester + H(2)O = ubiquitin + a thiol.,function:Metalloprotease component of the 26S proteasome that specifically cleaves 'Lys-63'-linked polyubiquitin chains. The 26S proteasome is involved in the ATP-dependent degradation of ubiquitinated proteins. The function of the 'Lys-63'-specific deubiquitination of the proteasome is unclear.,similarity:Belongs to the peptidase M67A family. PSMD14 subfamily.,similarity:Contains 1 MPN (JAB/Mov34) domain.,subunit:Component of the 19S regulatory cap of the 26S proteasome.,tissue specificity:Widely expressed. Highest levels in heart and skeletal muscle.,

**Nanjing BYabscience technology Co.,Ltd**

网址: [www.njbybio.com](http://www.njbybio.com)

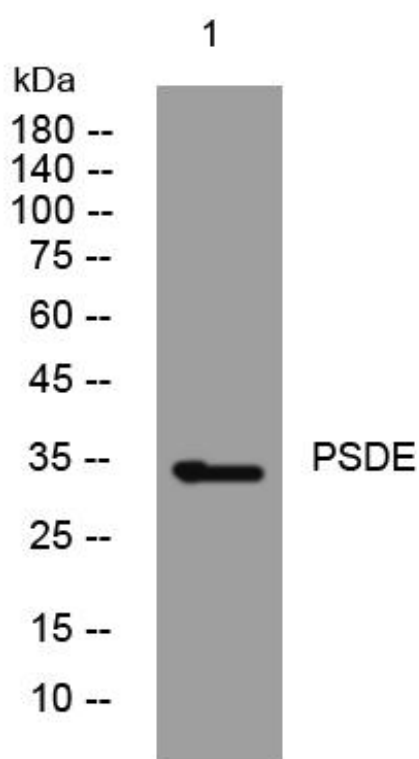
官方热线: 025-5229-8998

监督电话: 15950492658



<b>Background</b>	This gene encodes a component of the 26S proteasome. The 26S proteasome is a large multiprotein complex that catalyzes the degradation of ubiquitinated intracellular proteins. The encoded protein is a component of the 19S regulatory cap complex of the 26S proteasome and mediates substrate deubiquitination. A pseudogene of this gene is also located on the long arm of chromosome 2. [provided by RefSeq, Feb 2012],
<b>matters needing attention</b>	Avoid repeated freezing and thawing!
<b>Usage suggestions</b>	This product can be used in immunological reaction related experiments. For more information, please consult technical personnel.

## Products Images



Western Blot analysis of various cells using PSDE mouse mAb