



ISM2 mouse mAb

Catalog No	BYmab-11967
Isotype	IgG
Reactivity	Human;Rat;Mouse;
Applications	WB
Gene Name	ISM2 TAIL1 THSD3 PSEC0137
Protein Name	ISM2
Immunogen	Synthesized peptide derived from human ISM2 AA range: 65-115
Specificity	This antibody detects endogenous levels of ISM2 at Human
Formulation	Liquid in PBS containing 50% glycerol, 0.5% BSA and 0.02% sodium azide.
Source	Monoclonal, Mouse,IgG
Purification	The antibody was affinity-purified from mouse antiserum by affinity-chromatography using epitope-specific immunogen.
Dilution	WB 1:500-2000
Concentration	1 mg/ml
Purity	≥90%
Storage Stability	-20°C/1 year
Synonyms	
Observed Band	
Cell Pathway	Secreted .
Tissue Specificity	Expressed at high levels in the placenta and at moderate levels in the pancreas, kidney, heart, liver, lung, brain and skeletal muscle.
Function	similarity:Belongs to the isthmin family.,similarity:Contains 1 AMOP domain.,similarity:Contains 1 TSP type-1 domain.,tissue specificity:Expressed at high levels in the placenta and at moderate levels in the pancreas, kidney, heart, liver, lung, brain and skeletal muscle.,
Background	The protein encoded by this gene contains a type 1 thrombospondin domain, which is present in thrombospondin, a number of proteins involved in the complement pathway, as well as in extracellular matrix proteins. Two alternatively spliced transcript variants encoding distinct isoforms have been observed. [provided by RefSeq, Mar 2009],

Nanjing BYabscience technology Co.,Ltd

网址: www.njbybio.com

官方热线: 025-5229-8998

监督电话: 15950492658



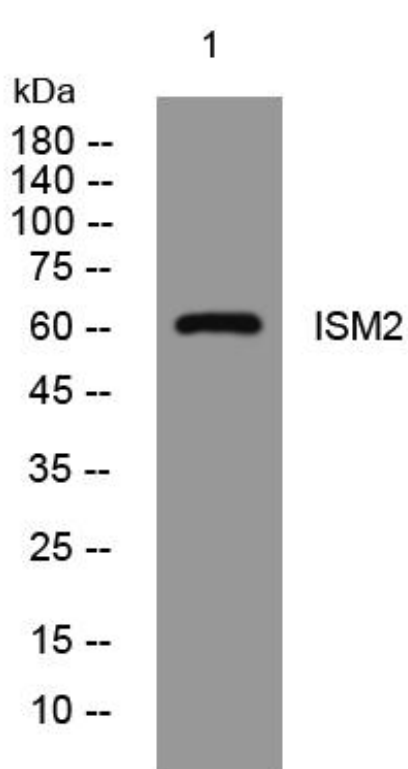
matters needing attention

Avoid repeated freezing and thawing!

Usage suggestions

This product can be used in immunological reaction related experiments. For more information, please consult technical personnel.

Products Images



Western Blot analysis of various cells using ISM2 mouse mAb