



PAP1L mouse mAb

Catalog No	BYmab-11961
Isotype	IgG
Reactivity	Human;Rat;Mouse;
Applications	WB
Gene Name	PABPC1L C20orf119
Protein Name	PAP1L
Immunogen	Synthesized peptide derived from human PAP1L AA range: 251-301
Specificity	This antibody detects endogenous levels of PAP1L at Human
Formulation	Liquid in PBS containing 50% glycerol, 0.5% BSA and 0.02% sodium azide.
Source	Monoclonal, Mouse,IgG
Purification	The antibody was affinity-purified from mouse antiserum by affinity-chromatography using epitope-specific immunogen.
Dilution	WB 1:500-2000
Concentration	1 mg/ml
Purity	≥90%
Storage Stability	-20°C/1 year
Synonyms	
Observed Band	
Cell Pathway	extracellular exosome,
Tissue Specificity	
Function	similarity:Belongs to the polyadenylate-binding protein type-1 family.,similarity:Contains 1 MABC domain.,similarity:Contains 4 RRM (RNA recognition motif) domains.,
Background	
matters needing attention	Avoid repeated freezing and thawing!

Nanjing BYabscience technology Co.,Ltd

网址: www.njbybio.com

官方热线: 025-5229-8998

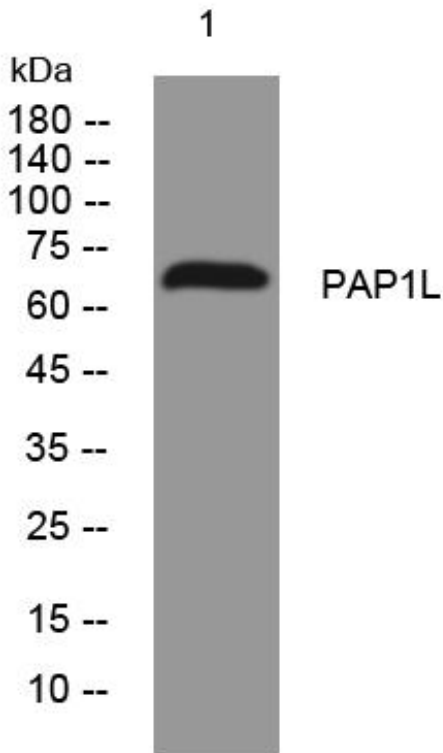
监督电话: 15950492658



Usage suggestions

This product can be used in immunological reaction related experiments. For more information, please consult technical personnel.

Products Images



Western Blot analysis of various cells using PAP1L mouse mAb

Nanjing BYabs science technology Co.,Ltd

网址: www.njbybio.com

官方热线: 025-5229-8998

监督电话: 15950492658