



# PPR17 mouse mAb

<b>Catalog No</b>	BYmab-11958
<b>Isotype</b>	IgG
<b>Reactivity</b>	Human; Mouse
<b>Applications</b>	WB
<b>Gene Name</b>	PPP1R17 C7orf16 GSBS
<b>Protein Name</b>	PPR17
<b>Immunogen</b>	Synthesized peptide derived from human PPR17 AA range: 75-125
<b>Specificity</b>	This antibody detects endogenous levels of PPR17 at Human/Mouse
<b>Formulation</b>	Liquid in PBS containing 50% glycerol, 0.5% BSA and 0.02% sodium azide.
<b>Source</b>	Monoclonal, Mouse,IgG
<b>Purification</b>	The antibody was affinity-purified from mouse antiserum by affinity-chromatography using epitope-specific immunogen.
<b>Dilution</b>	WB 1:500-2000
<b>Concentration</b>	1 mg/ml
<b>Purity</b>	≥90%
<b>Storage Stability</b>	-20°C/1 year
<b>Synonyms</b>	
<b>Observed Band</b>	
<b>Cell Pathway</b>	intracellular,
<b>Tissue Specificity</b>	Highly expressed in cerebellum.
<b>Function</b>	function:Inhibits protein phosphatase-2A and protein phosphatase-1.,PTM:Substrate for cGMP-dependent protein kinase.,tissue specificity:Highly expressed in cerebellum.,
<b>Background</b>	The protein encoded by this gene is found primarily in cerebellar Purkinje cells, where it functions as a protein phosphatase inhibitor. The encoded protein is a substrate for cGMP-dependent protein kinase. An allele of this gene was discovered that increases susceptibility to hypercholesterolemia. Two transcript variants encoding different isoforms have been found for this gene. [provided by RefSeq, Jul 2010],

**Nanjing BYabscience technology Co.,Ltd**

网址: [www.njbybio.com](http://www.njbybio.com)

官方热线: 025-5229-8998

监督电话: 15950492658



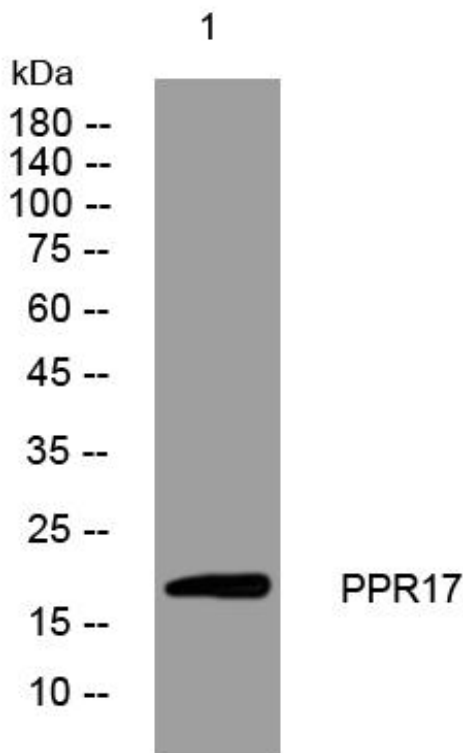
**matters needing attention**

Avoid repeated freezing and thawing!

**Usage suggestions**

This product can be used in immunological reaction related experiments. For more information, please consult technical personnel.

## Products Images



Western Blot analysis of various cells using PPR17 mouse mAb