



FKB10 mouse mAb

Catalog No	BYmab-11938
Isotype	IgG
Reactivity	Human; Mouse
Applications	WB
Gene Name	FKBP10 FKBP65 PSEC0056
Protein Name	FKB10
Immunogen	Synthesized peptide derived from human FKB10 AA range: 339-389
Specificity	This antibody detects endogenous levels of FKB10 at Human/Mouse
Formulation	Liquid in PBS containing 50% glycerol, 0.5% BSA and 0.02% sodium azide.
Source	Monoclonal, Mouse,IgG
Purification	The antibody was affinity-purified from mouse antiserum by affinity-chromatography using epitope-specific immunogen.
Dilution	WB 1:500-2000
Concentration	1 mg/ml
Purity	≥90%
Storage Stability	-20°C/1 year
Synonyms	
Observed Band	
Cell Pathway	Endoplasmic reticulum lumen .
Tissue Specificity	
Function	catalytic activity:Peptidylproline (omega=180) = peptidylproline (omega=0).,enzyme regulation:Inhibited by both FK506 and rapamycin, but not by cyclosporin A.,function:PPLases accelerate the folding of proteins during protein synthesis.,PTM:Glycosylated and phosphorylated.,similarity:Belongs to the FKBP-type PPLase family.,similarity:Contains 2 EF-hand domains.,similarity:Contains 4 PPLase FKBP-type domains.,
Background	The protein encoded by this gene belongs to the FKBP-type peptidyl-prolyl cis/trans isomerase (PPLase) family. This protein localizes to the endoplasmic reticulum and acts as a molecular chaperone. Alternatively spliced variants encoding different isoforms have been reported, but their biological validity has not been determined.[provided by RefSeq, Nov 2009],

Nanjing BYabscience technology Co.,Ltd



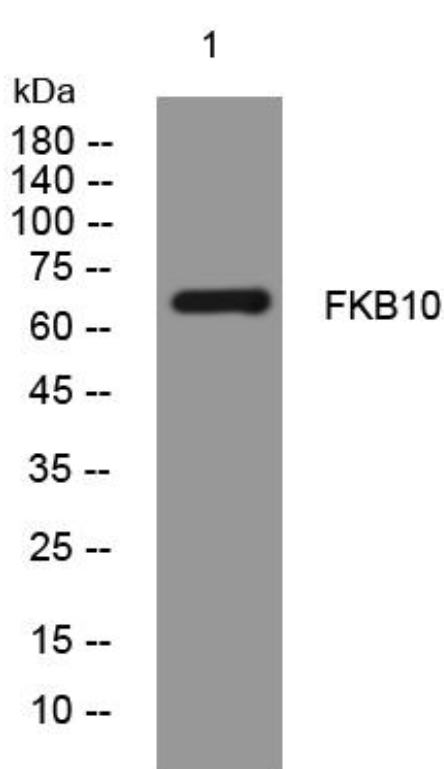
matters needing attention

Avoid repeated freezing and thawing!

Usage suggestions

This product can be used in immunological reaction related experiments. For more information, please consult technical personnel.

Products Images



Western Blot analysis of various cells using FKB10 mouse mAb

Nanjing BYabs science technology Co.,Ltd

网址: www.njbybio.com

官方热线: 025-5229-8998

监督电话: 15950492658