



SYPL2 mouse mAb

| | |
|---------------------------|--|
| Catalog No | BYmab-11935 |
| Isotype | IgG |
| Reactivity | Human; Mouse |
| Applications | WB |
| Gene Name | SYPL2 |
| Protein Name | SYPL2 |
| Immunogen | Synthesized peptide derived from human SYPL2 AA range: 160-210 |
| Specificity | This antibody detects endogenous levels of SYPL2 at Human/Mouse |
| Formulation | Liquid in PBS containing 50% glycerol, 0.5% BSA and 0.02% sodium azide. |
| Source | Monoclonal, Mouse,IgG |
| Purification | The antibody was affinity-purified from mouse antiserum by affinity-chromatography using epitope-specific immunogen. |
| Dilution | WB 1:500-2000 |
| Concentration | 1 mg/ml |
| Purity | ≥90% |
| Storage Stability | -20°C/1 year |
| Synonyms | |
| Observed Band | |
| Cell Pathway | Membrane ; Multi-pass membrane protein . Triad junction, the junctional complex between the transverse tubule and the sarcoplasmic reticulum. . |
| Tissue Specificity | |
| Function | function:Involved in communication between the T-tubular and junctional sarcoplasmic reticulum (SR) membranes.,similarity:Belongs to the synaptophysin/synaptobrevin family.,similarity:Contains 1 MARVEL domain.,subcellular location:Triad junction, the junctional complex between the transverse tubule and the sarcoplasmic reticulum., |
| Background | |
| matters needing attention | Avoid repeated freezing and thawing! |

Nanjing BYabscience technology Co.,Ltd

网址: www.njbybio.com

官方热线: 025-5229-8998

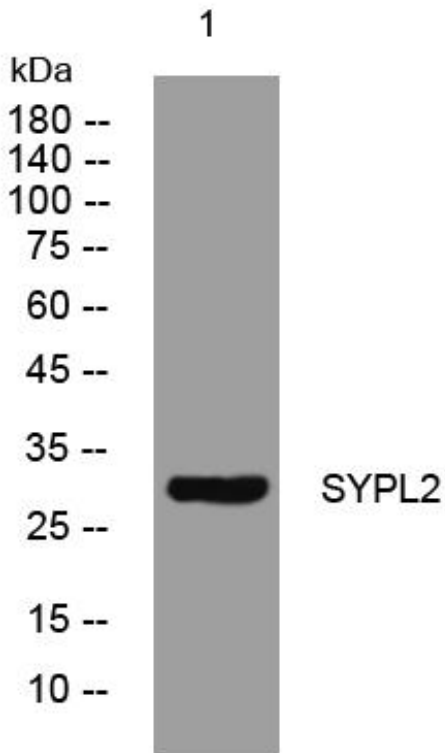
监督电话: 15950492658



Usage suggestions

This product can be used in immunological reaction related experiments. For more information, please consult technical personnel.

Products Images



Western Blot analysis of various cells using SYPL2 mouse mAb

Nanjing BYabs science technology Co.,Ltd

网址: www.njbybio.com

官方热线: 025-5229-8998

监督电话: 15950492658