



# KCMF1 mouse mAb

Catalog No	BYmab-11926
Isotype	IgG
Reactivity	Human; Mouse
Applications	WB
Gene Name	KCMF1 FIGC ZZZ1
Protein Name	KCMF1
Immunogen	Synthesized peptide derived from human KCMF1 AA range: 126-176
Specificity	This antibody detects endogenous levels of KCMF1 at Human/Mouse
Formulation	Liquid in PBS containing 50% glycerol, 0.5% BSA and 0.02% sodium azide.
Source	Monoclonal, Mouse,IgG
Purification	The antibody was affinity-purified from mouse antiserum by affinity-chromatography using epitope-specific immunogen.
Dilution	WB 1:500-2000
Concentration	1 mg/ml
Purity	≥90%
Storage Stability	-20°C/1 year
Synonyms	
Observed Band	
Cell Pathway	
Tissue Specificity	Spleen, small intestine, ovary, peripheral blood, lung, kidney and pancreas. Expressed at low levels in the thymus, prostate, testis, colon, heart, brain, placenta and liver.
Function	function:Has intrinsic E3 ubiquitin ligase activity and promotes ubiquitination.,induction:Up-regulated by basic fibroblast growth factor (bFGF) in gastric cancer cells.,similarity:Belongs to the KCMF1 family.,similarity:Contains 1 C2H2-type zinc finger.,similarity:Contains 1 ZZ-type zinc finger.,tissue specificity:Spleen, small intestine, ovary, peripheral blood, lung, kidney and pancreas. Expressed at low levels in the thymus, prostate, testis, colon, heart, brain, placenta and liver.,
Background	

Nanjing BYabscience technology Co.,Ltd



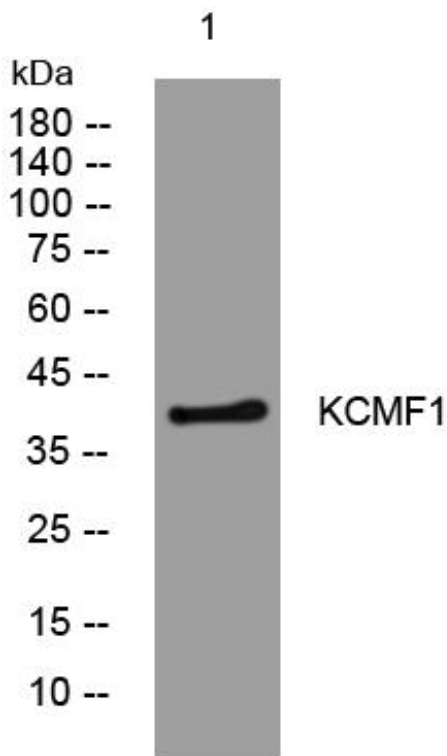
**matters needing attention**

Avoid repeated freezing and thawing!

**Usage suggestions**

This product can be used in immunological reaction related experiments. For more information, please consult technical personnel.

## Products Images



Western Blot analysis of various cells using KCMF1 mouse mAb

Nanjing BYabs science technology Co.,Ltd

网址: [www.njbybio.com](http://www.njbybio.com)

官方热线: 025-5229-8998

监督电话: 15950492658