



RIFK mouse mAb

Catalog No	BYmab-11924
Isotype	IgG
Reactivity	Human; Mouse
Applications	WB
Gene Name	RFK
Protein Name	RIFK
Immunogen	Synthesized peptide derived from human RIFK AA range: 82-132
Specificity	This antibody detects endogenous levels of RIFK at Human/Mouse
Formulation	Liquid in PBS containing 50% glycerol, 0.5% BSA and 0.02% sodium azide.
Source	Monoclonal, Mouse,IgG
Purification	The antibody was affinity-purified from mouse antiserum by affinity-chromatography using epitope-specific immunogen.
Dilution	WB 1:500-2000
Concentration	1 mg/ml
Purity	≥90%
Storage Stability	-20°C/1 year
Synonyms	
Observed Band	
Cell Pathway	Cytoplasm .
Tissue Specificity	Detected in brain, placenta and urinary bladder.
Function	catalytic activity:ATP + riboflavin = ADP + FMN.,cofactor:Zinc or magnesium.,function:Catalyzes the phosphorylation of riboflavin (vitamin B2) to form flavin-mononucleotide (FMN).,pathway:Cofactor biosynthesis; FMN biosynthesis; FMN from riboflavin (ATP route): step 1/1.,subunit:Monomer.,tissue specificity:Detected in brain, placenta and urinary bladder.,
Background	Riboflavin kinase (RFK; EC 2.7.1.26) is an essential enzyme that catalyzes the phosphorylation of riboflavin (vitamin B2) to form flavin mononucleotide (FMN), an obligatory step in vitamin B2 utilization and flavin cofactor synthesis (Karthikeyan et al., 2003 [PubMed 12623014]).[supplied by OMIM, Nov 2009],

Nanjing BYabscience technology Co.,Ltd



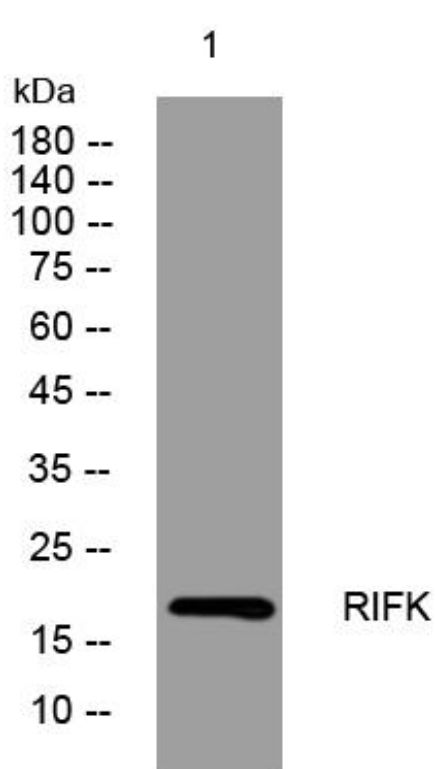
matters needing attention

Avoid repeated freezing and thawing!

Usage suggestions

This product can be used in immunological reaction related experiments. For more information, please consult technical personnel.

Products Images



Western Blot analysis of various cells using RIFK mouse mAb