



# TUSC1 mouse mAb

Catalog No	BYmab-11921
Isotype	IgG
Reactivity	Human; Mouse
Applications	WB
Gene Name	TUSC1
Protein Name	TUSC1
Immunogen	Synthesized peptide derived from human TUSC1 AA range: 120-170
Specificity	This antibody detects endogenous levels of TUSC1 at Human/Mouse
Formulation	Liquid in PBS containing 50% glycerol, 0.5% BSA and 0.02% sodium azide.
Source	Monoclonal, Mouse,IgG
Purification	The antibody was affinity-purified from mouse antiserum by affinity-chromatography using epitope-specific immunogen.
Dilution	WB 1:500-2000
Concentration	1 mg/ml
Purity	≥90%
Storage Stability	-20°C/1 year
Synonyms	
Observed Band	
Cell Pathway	
Tissue Specificity	Widely expressed at low level. Expressed at higher level in testis, weakly expressed in muscle, colon, lung and spleen. Not detected in 3 non small cell lung carcinoma (NSCLC) cell lines with homozygous deletion of the 9p region, while it is down-regulated in 3 other tumor cell lines.
Function	tissue specificity:Widely expressed at low level. Expressed at higher level in testis, weakly expressed in muscle, colon, lung and spleen. Not detected in 3 non small cell lung carcinoma (NSCLC) cell lines with homozygous deletion of the 9p region, while it is down-regulated in 3 other tumor cell lines.,
Background	This gene is located within the region of chromosome 9p that harbors tumor suppressor genes critical in carcinogenesis. It is an intronless gene which is downregulated in non-small-cell lung cancer and small-cell lung cancer cell lines, suggesting that it may play a role in lung tumorigenesis. [provided by RefSeq, Jul 2008],

Nanjing BYabscience technology Co.,Ltd



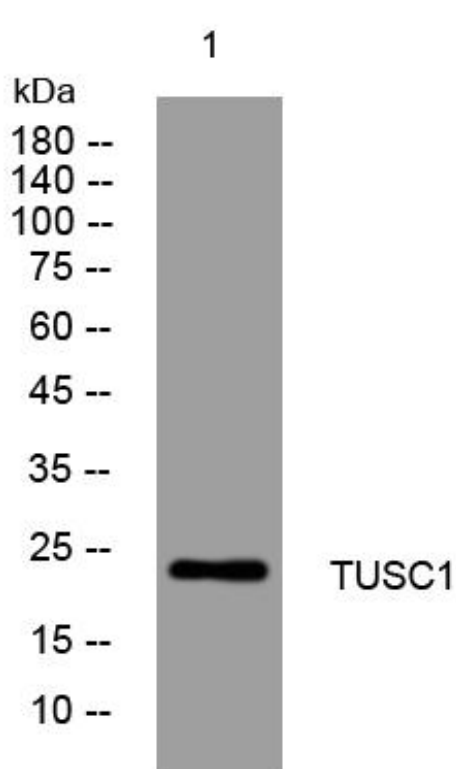
**matters needing attention**

Avoid repeated freezing and thawing!

**Usage suggestions**

This product can be used in immunological reaction related experiments. For more information, please consult technical personnel.

## Products Images



Western Blot analysis of various cells using TUSC1 mouse mAb