



HDBP1 mouse mAb

Catalog No	BYmab-11916
Isotype	IgG
Reactivity	Human; Mouse
Applications	WB
Gene Name	GPIHBP1 HBP1
Protein Name	HDBP1
Immunogen	Synthesized peptide derived from human HDBP1 AA range: 1-51
Specificity	This antibody detects endogenous levels of HDBP1 at Human/Mouse
Formulation	Liquid in PBS containing 50% glycerol, 0.5% BSA and 0.02% sodium azide.
Source	Monoclonal, Mouse,IgG
Purification	The antibody was affinity-purified from mouse antiserum by affinity-chromatography using epitope-specific immunogen.
Dilution	WB 1:500-2000
Concentration	1 mg/ml
Purity	≥90%
Storage Stability	-20°C/1 year
Synonyms	
Observed Band	
Cell Pathway	Apical cell membrane ; Lipid-anchor, GPI-anchor . Basolateral cell membrane ; Lipid-anchor, GPI-anchor . Cell membrane ; Lipid-anchor, GPI-anchor .
Tissue Specificity	
Function	caution:The mouse ortholog has been suggested to be a GPI-anchored protein, but no GPI-anchor is detected by prediction methods.,function:Plays a key role in the lipolytic processing of chylomicrons.,polymorphism:The missense variant Arg-56 may be associated with severe hypertriglyceridemia and chylomicronemia.,similarity:Contains 1 UPAR/Ly6 domain.,subcellular location:Localized at the cell surface.,subunit:Binds with high affinity to high-density lipoprotein (HDL) (By similarity). Binds to lipoprotein lipase (LPL), chylomicrons and APOA5.,
Background	This gene encodes a capillary endothelial cell protein that facilitates the lipolytic processing of triglyceride-rich lipoproteins. The encoded protein is a glycosylphosphatidylinositol-anchored protein that is a member of the lymphocyte

Nanjing BYabscience technology Co.,Ltd



antigen 6 (Ly6) family. This protein plays a major role in transporting lipoprotein lipase (LPL) from the subendothelial spaces to the capillary lumen. Mutations in this gene are the cause of hyperlipoproteinemia, type 1D. Alternate splicing results in multiple transcript variants. [provided by RefSeq, Sep 2014],

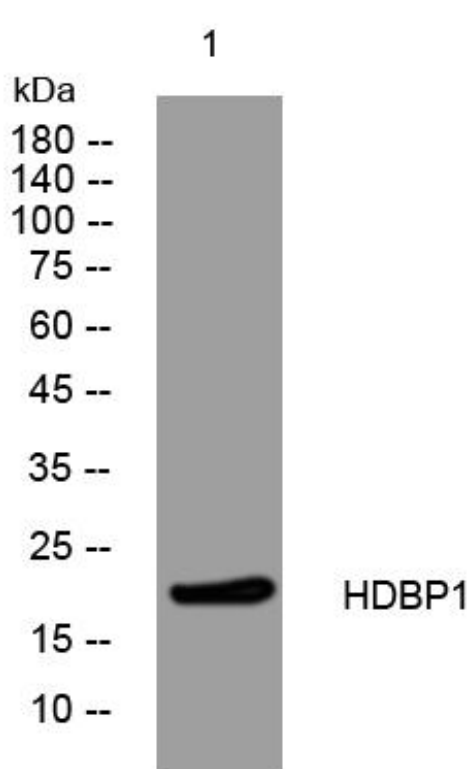
matters needing attention

Avoid repeated freezing and thawing!

Usage suggestions

This product can be used in immunological reaction related experiments. For more information, please consult technical personnel.

Products Images



Western Blot analysis of various cells using HDBP1 mouse mAb