

CC124 mouse mAb

Catalog No	BYmab-11907
Isotype	IgG
Reactivity	Human; Mouse
Applications	WB
Gene Name	CCDC124
Protein Name	CC124
Immunogen	Synthesized peptide derived from human CC124 AA range: 56-106
Specificity	This antibody detects endogenous levels of CC124 at Human/Mouse
Formulation	Liquid in PBS containing 50% glycerol, 0.5% BSA and 0.02% sodium azide.
Source	Monoclonal, Mouse,IgG
Purification	The antibody was affinity-purified from mouse antiserum by affinity-chromatography using epitope-specific immunogen.
Dilution	WB 1:500-2000
Concentration	1 mg/ml
Purity	≥90%
Storage Stability	-20℃/1 year
Synonyms	
Observed Band	
Cell Pathway	Cytoplasm, cytoskeleton, microtubule organizing center, centrosome . Midbody . Colocalizes with gamma-tubulin at interphase, prophase, metaphase, and anaphase. Relocates from centrosome to midbody at telophase.
Tissue Specificity	Ubiquitously expressed.
Function	similarity:Belongs to the CCDC124 family.,
Background	
matters needing attention	Avoid repeated freezing and thawing!

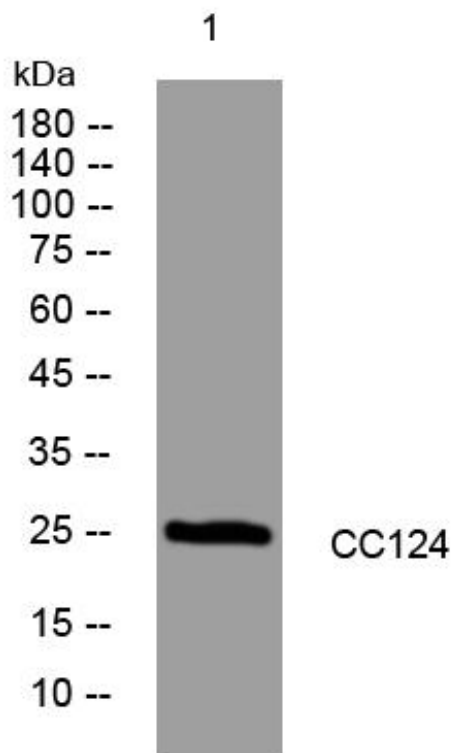
Nanjing BYabs science technology Co.,Ltd



Usage suggestions

This product can be used in immunological reaction related experiments. For more information, please consult technical personnel.

Products Images



Western Blot analysis of various cells using CC124 mouse mAb

Nanjing BYabs science technology Co.,Ltd

网址: www.njbybio.com

官方热线: 025-5229-8998

监督电话: 15950492658