



# ATG12 mouse mAb

<b>Catalog No</b>	BYmab-11906
<b>Isotype</b>	IgG
<b>Reactivity</b>	Human; Mouse;Rat
<b>Applications</b>	WB
<b>Gene Name</b>	ATG12 APG12 APG12L
<b>Protein Name</b>	ATG12
<b>Immunogen</b>	Synthesized peptide derived from human ATG12 AA range: 80-130
<b>Specificity</b>	This antibody detects endogenous levels of ATG12 at Human/Mouse/Rat
<b>Formulation</b>	Liquid in PBS containing 50% glycerol, 0.5% BSA and 0.02% sodium azide.
<b>Source</b>	Monoclonal, Mouse,IgG
<b>Purification</b>	The antibody was affinity-purified from mouse antiserum by affinity-chromatography using epitope-specific immunogen.
<b>Dilution</b>	WB 1:500-2000
<b>Concentration</b>	1 mg/ml
<b>Purity</b>	≥90%
<b>Storage Stability</b>	-20°C/1 year
<b>Synonyms</b>	
<b>Observed Band</b>	
<b>Cell Pathway</b>	Cytoplasm . Preautophagosomal structure membrane ; Peripheral membrane protein . TECPR1 recruits the ATG12-ATG5 conjugate to the autolysosomal membrane.
<b>Tissue Specificity</b>	Ubiquitous.
<b>Function</b>	function:Required for autophagy.,similarity:Belongs to the ATG12 family.,subunit:Conjugated to ATG5.,tissue specificity:Ubiquitous.,
<b>Background</b>	Autophagy is a process of bulk protein degradation in which cytoplasmic components, including organelles, are enclosed in double-membrane structures called autophagosomes and delivered to lysosomes or vacuoles for degradation. ATG12 is the human homolog of a yeast protein involved in autophagy (Mizushima et al., 1998 [PubMed 9852036]).[supplied by OMIM, Mar 2008],
<b>matters needing attention</b>	Avoid repeated freezing and thawing!

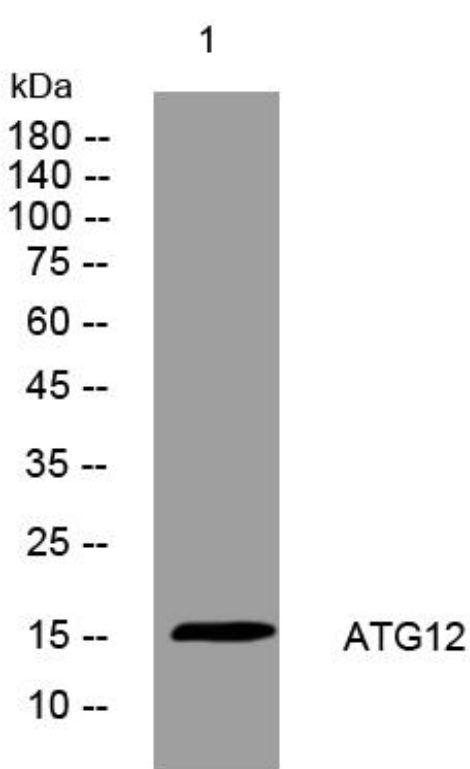
**Nanjing BYabscience technology Co.,Ltd**



### Usage suggestions

This product can be used in immunological reaction related experiments. For more information, please consult technical personnel.

## Products Images



Western Blot analysis of various cells using ATG12 mouse mAb

Nanjing BYabs science technology Co.,Ltd

网址: [www.njbybio.com](http://www.njbybio.com)

官方热线: 025-5229-8998

监督电话: 15950492658