



# AMELY mouse mAb

Catalog No	BYmab-11902
Isotype	IgG
Reactivity	Human
Applications	WB
Gene Name	AMELY AMGL AMGY
Protein Name	AMELY
Immunogen	Synthesized peptide derived from human AMELY.AA range 17-57
Specificity	This antibody detects endogenous levels of AMELY at Human
Formulation	Liquid in PBS containing 50% glycerol, 0.5% BSA and 0.02% sodium azide.
Source	Monoclonal, Mouse,IgG
Purification	The antibody was affinity-purified from mouse antiserum by affinity-chromatography using epitope-specific immunogen.
Dilution	WB 1:500-2000
Concentration	1 mg/ml
Purity	≥90%
Storage Stability	-20°C/1 year
Synonyms	
Observed Band	
Cell Pathway	Secreted, extracellular space, extracellular matrix.
Tissue Specificity	
Function	developmental stage:Transiently but abundantly expressed by ameloblasts during tooth development. Amelogenin is the predominant protein in developing dental enamel.,function:Plays a role in biomineralization. Seems to regulate the formation of crystallites during the secretory stage of tooth enamel development. Thought to play a major role in the structural organization and mineralization of developing enamel.,miscellaneous:This isoform is encoded on the Y chromosome.,similarity:Belongs to the amelogenin family.,
Background	This gene encodes a member of the amelogenin family of extracellular matrix proteins. Amelogenins are involved in biomineralization during tooth enamel development. Mutations in a related gene on chromosome X cause X-linked amelogenesis imperfecta. [provided by RefSeq, Jul 2008],

Nanjing BYabscience technology Co.,Ltd



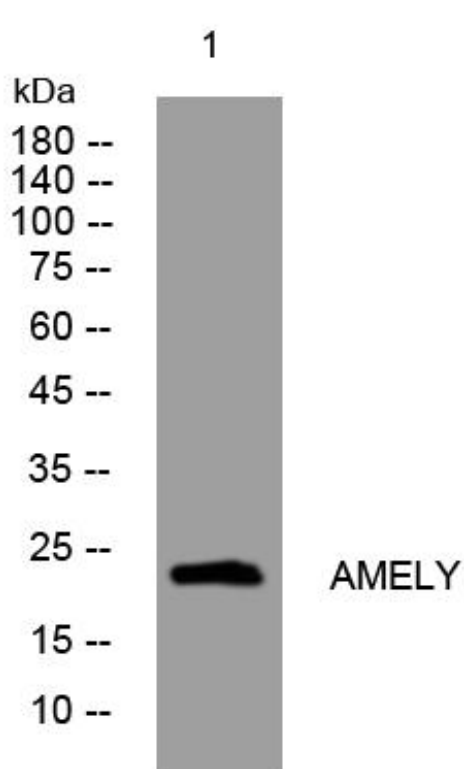
**matters needing attention**

Avoid repeated freezing and thawing!

**Usage suggestions**

This product can be used in immunological reaction related experiments. For more information, please consult technical personnel.

## Products Images



Western Blot analysis of various cells using AMELY mouse mAb