



NMRL1 mouse mAb

Catalog No	BYmab-11898
Isotype	IgG
Reactivity	Human; Mouse;Rat
Applications	WB
Gene Name	NMRAL1 HSCARG
Protein Name	NMRL1
Immunogen	Synthesized peptide derived from human NMRL1 AA range: 179-229
Specificity	This antibody detects endogenous levels of NMRL1 at Human/Mouse/Rat
Formulation	Liquid in PBS containing 50% glycerol, 0.5% BSA and 0.02% sodium azide.
Source	Monoclonal, Mouse,IgG
Purification	The antibody was affinity-purified from mouse antiserum by affinity-chromatography using epitope-specific immunogen.
Dilution	WB 1:500-2000
Concentration	1 mg/ml
Purity	≥90%
Storage Stability	-20°C/1 year
Synonyms	
Observed Band	
Cell Pathway	Cytoplasm. Cytoplasm, perinuclear region. Nucleus. Under normal redox growth conditions localizes in the cytoplasm and perinuclear region. Nuclear localization is promoted by increased intracellular nitric oxide and reduced NADPH/NADP(+) ratios.
Tissue Specificity	
Function	similarity:Belongs to the NmrA-type oxidoreductase family.,subunit:Homodimer; disulfide-linked.,
Background	This gene encodes an NADPH sensor protein that preferentially binds to NADPH. The encoded protein also negatively regulates the activity of NF-kapMAB in a ubiquitylation-dependent manner. It plays a key role in cellular antiviral response by negatively regulating the interferon response factor 3-mediated expression of interferon beta. Alternative splicing of this gene results in multiple transcript variants. [provided by RefSeq, Feb 2015],

Nanjing BYabscience technology Co.,Ltd



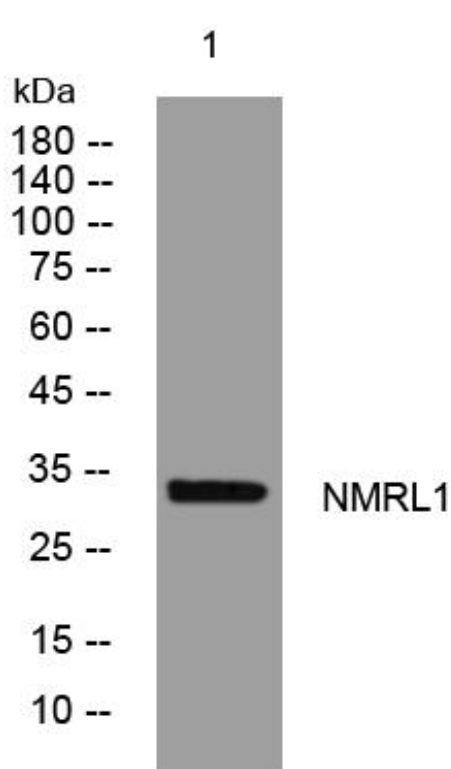
matters needing attention

Avoid repeated freezing and thawing!

Usage suggestions

This product can be used in immunological reaction related experiments. For more information, please consult technical personnel.

Products Images



Western Blot analysis of various cells using NMRL1 mouse mAb