



AL1L2 mouse mAb

| | |
|--------------------|---|
| Catalog No | BYmab-11886 |
| Isotype | IgG |
| Reactivity | Human; Mouse |
| Applications | WB |
| Gene Name | ALDH1L2 |
| Protein Name | AL1L2 |
| Immunogen | Synthesized peptide derived from human AL1L2 AA range: 74-124 |
| Specificity | This antibody detects endogenous levels of AL1L2 at Human/Mouse |
| Formulation | Liquid in PBS containing 50% glycerol, 0.5% BSA and 0.02% sodium azide. |
| Source | Monoclonal, Mouse,IgG |
| Purification | The antibody was affinity-purified from mouse antiserum by affinity-chromatography using epitope-specific immunogen. |
| Dilution | WB 1:500-2000 |
| Concentration | 1 mg/ml |
| Purity | ≥90% |
| Storage Stability | -20°C/1 year |
| Synonyms | |
| Observed Band | |
| Cell Pathway | Mitochondrion . |
| Tissue Specificity | Highly expressed in pancreas, heart, brain and skeletal muscle. |
| Function | catalytic activity:10-formyltetrahydrofolate + NADP(+) + H(2)O = tetrahydrofolate + CO(2) + NADPH.,sequence caution:Wrong choice of CDS.,similarity:Belongs to the aldehyde dehydrogenase family.,similarity:Contains 1 acyl carrier domain.,similarity:In the C-terminal section; belongs to the aldehyde dehydrogenase family. ALDH1L subfamily.,similarity:In the N-terminal section; belongs to the GART family., |
| Background | This gene encodes a member of both the aldehyde dehydrogenase superfamily and the formyl transferase superfamily. This member is the mitochondrial form of 10-formyltetrahydrofolate dehydrogenase (FDH), which converts 10-formyltetrahydrofolate to tetrahydrofolate and CO2 in an NADP(+)-dependent reaction, and plays an essential role in the distribution of one-carbon groups |

Nanjing BYabscience technology Co.,Ltd



between the cytosolic and mitochondrial compartments of the cell. Alternatively spliced transcript variants have been found for this gene.[provided by RefSeq, Oct 2010],

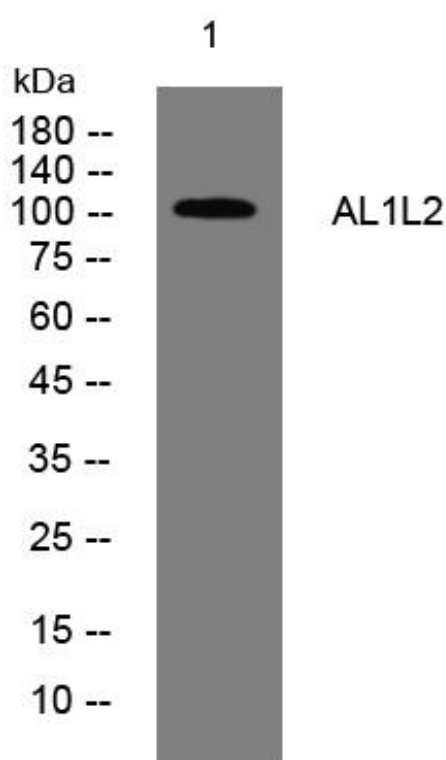
matters needing attention

Avoid repeated freezing and thawing!

Usage suggestions

This product can be used in immunological reaction related experiments. For more information, please consult technical personnel.

Products Images



Nanjing BYabs science technology Co.,Ltd

网址: www.njbybio.com

官方热线: 025-5229-8998

监督电话: 15950492658