



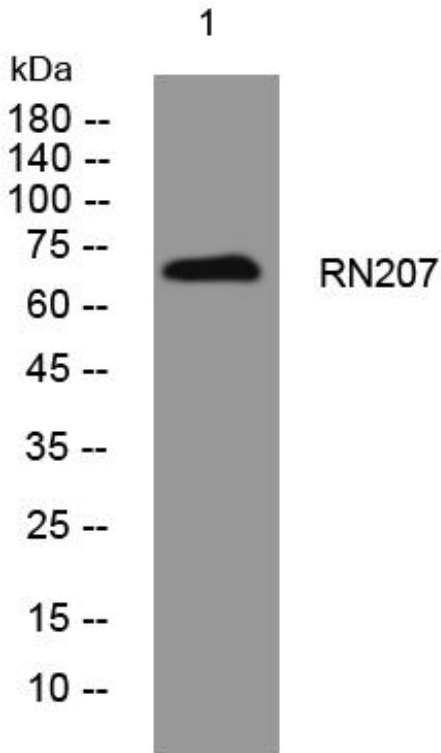
# RN207 mouse mAb

Catalog No	BYmab-11870
Isotype	IgG
Reactivity	Human; Mouse
Applications	WB
Gene Name	RNF207 C1orf188
Protein Name	RN207
Immunogen	Synthesized peptide derived from human RN207 AA range: 407-457
Specificity	This antibody detects endogenous levels of RN207 at Human/Mouse
Formulation	Liquid in PBS containing 50% glycerol, 0.5% BSA and 0.02% sodium azide.
Source	Monoclonal, Mouse,IgG
Purification	The antibody was affinity-purified from mouse antiserum by affinity-chromatography using epitope-specific immunogen.
Dilution	WB 1:500-2000
Concentration	1 mg/ml
Purity	≥90%
Storage Stability	-20°C/1 year
Synonyms	
Observed Band	
Cell Pathway	Cytoplasm . Probably located in the endoplasmic reticulum and/or possibly the cis-Golgi apparatus. .
Tissue Specificity	
Function	similarity:Contains 1 B box-type zinc finger.,similarity:Contains 1 RING-type zinc finger.,
Background	
matters needing attention	Avoid repeated freezing and thawing!
Usage suggestions	This product can be used in immunological reaction related experiments. For more information, please consult technical personnel.

Nanjing BYabscience technology Co.,Ltd



## Products Images



Western Blot analysis of various cells using RN207 mouse mAb