



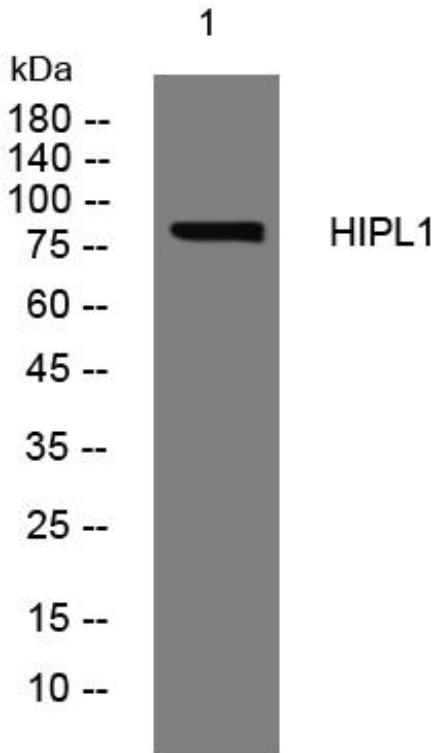
HIPL1 mouse mAb

Catalog No	BYmab-11862
Isotype	IgG
Reactivity	Human; Mouse
Applications	WB
Gene Name	HHIPL1 HHIP2 KIAA1822 UNQ9245/PRO34761
Protein Name	HIPL1
Immunogen	Synthesized peptide derived from human HIPL1 AA range: 730-780
Specificity	This antibody detects endogenous levels of HIPL1 at Human/Mouse
Formulation	Liquid in PBS containing 50% glycerol, 0.5% BSA and 0.02% sodium azide.
Source	Monoclonal, Mouse,IgG
Purification	The antibody was affinity-purified from mouse antiserum by affinity-chromatography using epitope-specific immunogen.
Dilution	WB 1:500-2000
Concentration	1 mg/ml
Purity	≥90%
Storage Stability	-20°C/1 year
Synonyms	
Observed Band	
Cell Pathway	Secreted .
Tissue Specificity	
Function	similarity:Belongs to the HHIP family.,similarity:Contains 1 SRCR domain.,
Background	This gene encodes a protein that belongs to the glucose/sorbose dehydrogenase family. The encoded protein also contains a domain that binds folate and reduced folic acid derivatives. [provided by RefSeq, Jul 2016],
matters needing attention	Avoid repeated freezing and thawing!
Usage suggestions	This product can be used in immunological reaction related experiments. For more information, please consult technical personnel.

Nanjing BYabscience technology Co.,Ltd



Products Images



Western Blot analysis of various cells using HIPL1 mouse mAb