



NEUR2 mouse mAb

Catalog No	BYmab-11852
Isotype	IgG
Reactivity	Human; Mouse;Rat
Applications	WB
Gene Name	NEU2
Protein Name	NEUR2
Immunogen	Synthesized peptide derived from human NEUR2 AA range: 69-119
Specificity	This antibody detects endogenous levels of NEUR2 at Human/Mouse/Rat
Formulation	Liquid in PBS containing 50% glycerol, 0.5% BSA and 0.02% sodium azide.
Source	Monoclonal, Mouse,IgG
Purification	The antibody was affinity-purified from mouse antiserum by affinity-chromatography using epitope-specific immunogen.
Dilution	WB 1:500-2000
Concentration	1 mg/ml
Purity	≥90%
Storage Stability	-20°C/1 year
Synonyms	
Observed Band	
Cell Pathway	Cytoplasm, cytosol .
Tissue Specificity	Expressed in skeletal muscle, fetal liver and embryonic carcinoma cell line NT2-D1.
Function	catalytic activity:Hydrolysis of alpha-(2->3)-, alpha-(2->6)-, alpha-(2->8)-glycosidic linkages of terminal sialic acid residues in oligosaccharides, glycoproteins, glycolipids, colominic acid and synthetic substrates.,function:Hydrolyzes sialylated compounds.,similarity:Belongs to the glycosyl hydrolase 33 family.,similarity:Contains 2 BNR repeats.,tissue specificity:Expressed in skeletal muscle, fetal liver and embryonic carcinoma cell line NT2D1.,
Background	This gene belongs to a family of glycohydrolytic enzymes which remove sialic acid residues from glycoproteins and glycolipids. Expression studies in COS7 cells confirmed that this gene encodes a functional sialidase. Its cytosolic localization was demonstrated by cell fractionation experiments. [provided by RefSeq, Jul

Nanjing BYabscience technology Co.,Ltd



2008],

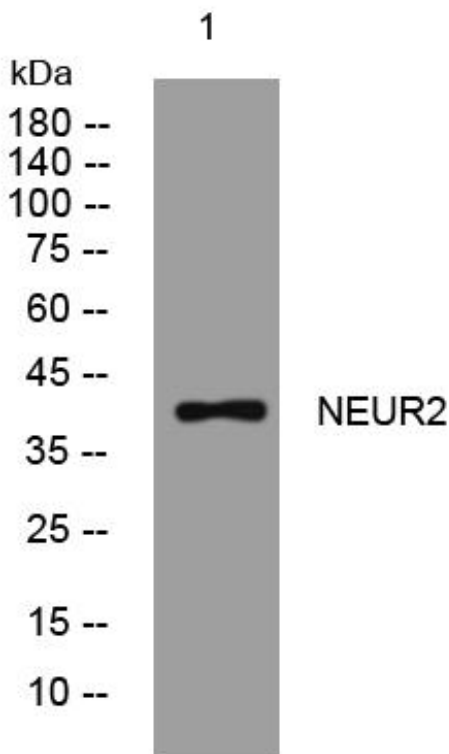
matters needing attention

Avoid repeated freezing and thawing!

Usage suggestions

This product can be used in immunological reaction related experiments. For more information, please consult technical personnel.

Products Images



Western Blot analysis of various cells using NEUR2 mouse mAb

Nanjing BYabs science technology Co.,Ltd

网址: www.njbybio.com

官方热线: 025-5229-8998

监督电话: 15950492658