



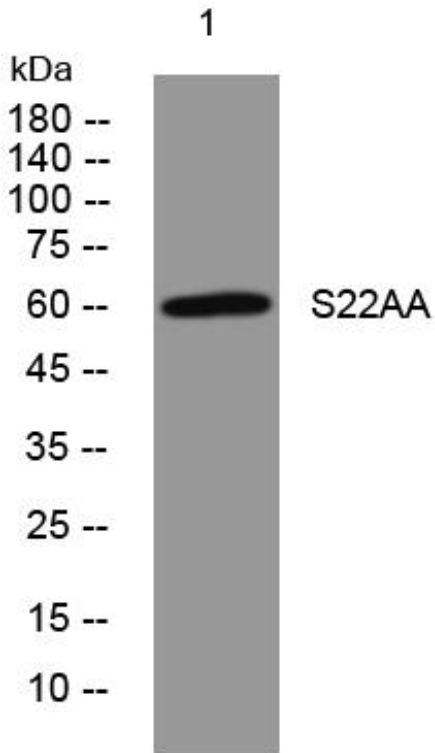
## S22AA mouse mAb

Catalog No	BYmab-11849
Isotype	IgG
Reactivity	Human;Rat;Mouse;
Applications	WB
Gene Name	SLC22A10 OAT5
Protein Name	S22AA
Immunogen	Synthesized peptide derived from human S22AA AA range: 154-204
Specificity	This antibody detects endogenous levels of S22AA at Human
Formulation	Liquid in PBS containing 50% glycerol, 0.5% BSA and 0.02% sodium azide.
Source	Monoclonal, Mouse,IgG
Purification	The antibody was affinity-purified from mouse antiserum by affinity-chromatography using epitope-specific immunogen.
Dilution	WB 1:500-2000
Concentration	1 mg/ml
Purity	≥90%
Storage Stability	-20°C/1 year
Synonyms	
Observed Band	
Cell Pathway	Membrane ; Multi-pass membrane protein .
Tissue Specificity	Detected in fetal and adult liver, and in adult kidney.
Function	similarity:Belongs to the major facilitator superfamily. Organic cation transporter family.,tissue specificity:Detected in fetal and adult liver, and in adult kidney.,
Background	
matters needing attention	Avoid repeated freezing and thawing!
Usage suggestions	This product can be used in immunological reaction related experiments. For more information, please consult technical personnel.

Nanjing BYabscience technology Co.,Ltd



## Products Images



Western Blot analysis of various cells using S22AA mouse mAb