



# S27A1 mouse mAb

<b>Catalog No</b>	BYmab-11814
<b>Isotype</b>	IgG
<b>Reactivity</b>	Human; Mouse;Rat
<b>Applications</b>	WB
<b>Gene Name</b>	SLC27A1 ACSVL5 FATP1
<b>Protein Name</b>	S27A1
<b>Immunogen</b>	Synthesized peptide derived from human S27A1 AA range: 115-165
<b>Specificity</b>	This antibody detects endogenous levels of S27A1 at Human/Mouse/Rat
<b>Formulation</b>	Liquid in PBS containing 50% glycerol, 0.5% BSA and 0.02% sodium azide.
<b>Source</b>	Monoclonal, Mouse,IgG
<b>Purification</b>	The antibody was affinity-purified from mouse antiserum by affinity-chromatography using epitope-specific immunogen.
<b>Dilution</b>	WB 1:500-2000
<b>Concentration</b>	1 mg/ml
<b>Purity</b>	≥90%
<b>Storage Stability</b>	-20°C/1 year
<b>Synonyms</b>	
<b>Observed Band</b>	
<b>Cell Pathway</b>	Cell membrane ; Single-pass membrane protein . Endomembrane system ; Single-pass membrane protein . Cytoplasm . Plasma membrane and intracellular membranes, at least in adipocytes. In adipocytes, but not myocytes, insulin via the mTORC1 signaling pathway induces a rapid translocation of SLC27A1 from intracellular compartments to the plasma membrane, paralleled by increased LCFA uptake. Insulin-dependent translocation from the cytoplasm to the cell membrane is regulated by EPRS1. Predominantly cytoplasmic in myocytes. .
<b>Tissue Specificity</b>	Highest levels of expression are detected in muscle and adipose tissue small, intermediate levels in small intestine, and barely detectable in liver. Expressed in brain gray matter (PubMed:21395585).
<b>Function</b>	function:Involved in translocation of long-chain fatty acids (LFCA) across the plasma membrane. The LFCA import appears to be hormone-regulated in a tissue-specific manner. In adipocytes, but not myocytes, insulin induces a rapid translocation of Fatp1 from intracellular compartments to the plasma membrane, paralleled by increased LFCA uptake. May act directly as a bona fide transporter,

**Nanjing BYabscience technology Co.,Ltd**



or alternatively, in a cytoplasmic or membrane-associated multimeric protein complex to trap and draw fatty acids towards accumulation. Plays a pivotal role in regulating available LFCA substrates from exogenous sources in tissues undergoing high levels of beta-oxidation or triglyceride synthesis. May be involved in regulation of cholesterol metabolism. Has acyl-CoA ligase activity for long-chain and very-long-chain fatty acids.,miscellaneous:FATP1-mediated fatty acid uptake is associated to paramaters r

## Background

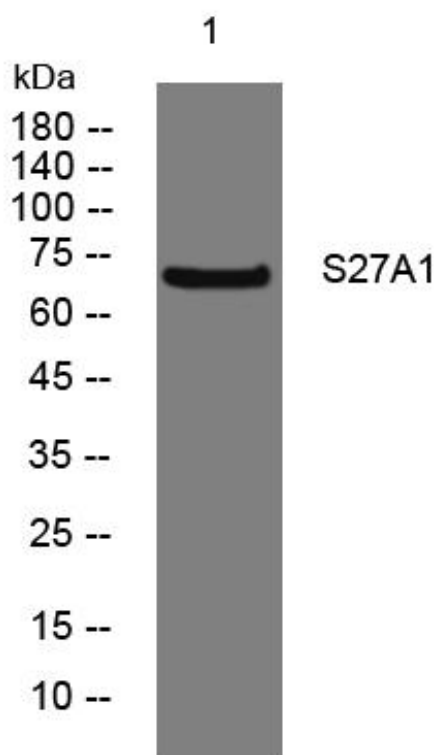
## matters needing attention

Avoid repeated freezing and thawing!

## Usage suggestions

This product can be used in immunological reaction related experiments. For more information, please consult technical personnel.

## Products Images



Western Blot analysis of various cells using S27A1 mouse mAb