



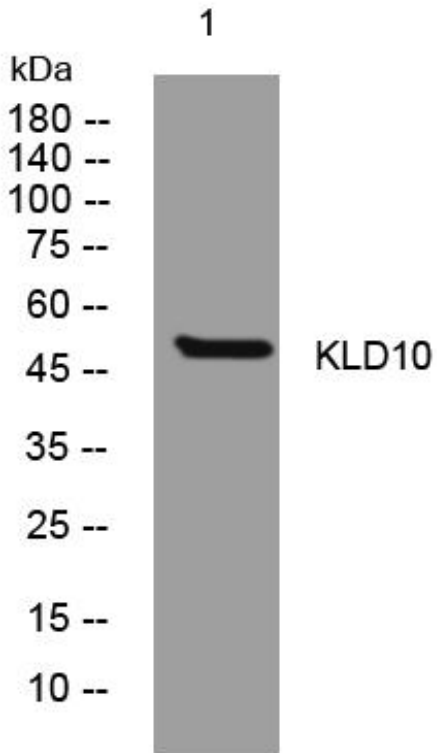
# KLD10 mouse mAb

Catalog No	BYmab-11808
Isotype	IgG
Reactivity	Human; Mouse;Rat
Applications	WB
Gene Name	KLHDC10 KIAA0265
Protein Name	KLD10
Immunogen	Synthesized peptide derived from human KLD10 AA range: 9-59
Specificity	This antibody detects endogenous levels of KLD10 at Human/Mouse/Rat
Formulation	Liquid in PBS containing 50% glycerol, 0.5% BSA and 0.02% sodium azide.
Source	Monoclonal, Mouse,IgG
Purification	The antibody was affinity-purified from mouse antiserum by affinity-chromatography using epitope-specific immunogen.
Dilution	WB 1:500-2000
Concentration	1 mg/ml
Purity	≥90%
Storage Stability	-20°C/1 year
Synonyms	
Observed Band	
Cell Pathway	Nucleus . Cytoplasm .
Tissue Specificity	
Function	developmental stage:Expressed in fetal brain, liver, lung, kidney and placenta.,similarity:Contains 6 Kelch repeats.,
Background	
matters needing attention	Avoid repeated freezing and thawing!
Usage suggestions	This product can be used in immunological reaction related experiments. For more information, please consult technical personnel.

Nanjing BYabscience technology Co.,Ltd



## Products Images



Western Blot analysis of various cells using KLD10 mouse mAb

Nanjing BYabs science technology Co.,Ltd

网址: [www.njbybio.com](http://www.njbybio.com)

官方热线: 025-5229-8998

监督电话: 15950492658