



SAMN1 mouse mAb

Catalog No	BYmab-11802
Isotype	IgG
Reactivity	Human; Mouse
Applications	WB
Gene Name	SAMSN1 HACS1
Protein Name	SAMN1
Immunogen	Synthesized peptide derived from human SAMN1 AA range: 316-366
Specificity	This antibody detects endogenous levels of SAMN1 at Human/Mouse
Formulation	Liquid in PBS containing 50% glycerol, 0.5% BSA and 0.02% sodium azide.
Source	Monoclonal, Mouse,IgG
Purification	The antibody was affinity-purified from mouse antiserum by affinity-chromatography using epitope-specific immunogen.
Dilution	WB 1:500-2000
Concentration	1 mg/ml
Purity	≥90%
Storage Stability	-20°C/1 year
Synonyms	
Observed Band	
Cell Pathway	Nucleus . Cytoplasm . Cell projection, ruffle . Shuttles between cytoplasm and nucleus. Colocalizes with the actin cytoskeleton and actin-rich membrane ruffles (By similarity). .
Tissue Specificity	Detected in peripheral blood B-cells (at protein level). Detected in spleen, liver and peripheral blood.
Function	similarity:Contains 1 SAM (sterile alpha motif) domain.,similarity:Contains 1 SH3 domain.,
Background	SAMSN1 is a member of a novel gene family of putative adaptors and scaffold proteins containing SH3 and SAM (sterile alpha motif) domains (Claudio et al., 2001 [PubMed 11536050]).[supplied by OMIM, Mar 2008],
matters needing attention	Avoid repeated freezing and thawing!

Nanjing BYabscience technology Co.,Ltd

网址: www.njbybio.com

官方热线: 025-5229-8998

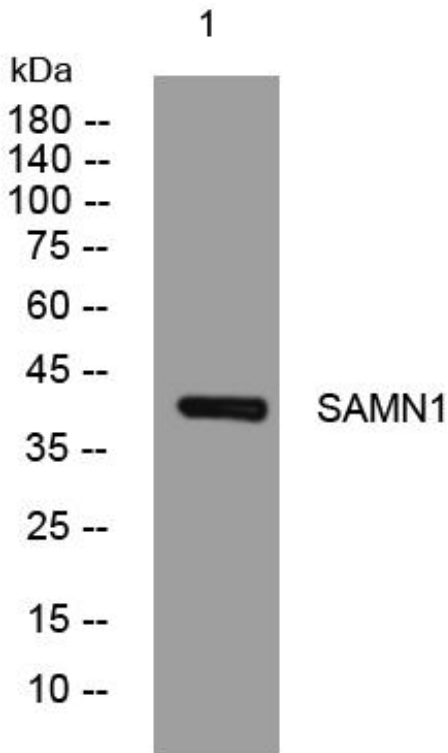
监督电话: 15950492658



Usage suggestions

This product can be used in immunological reaction related experiments. For more information, please consult technical personnel.

Products Images



Western Blot analysis of various cells using SAMN1 mouse mAb

Nanjing BYabscience technology Co.,Ltd

网址: www.njbybio.com

官方热线: 025-5229-8998

监督电话: 15950492658