



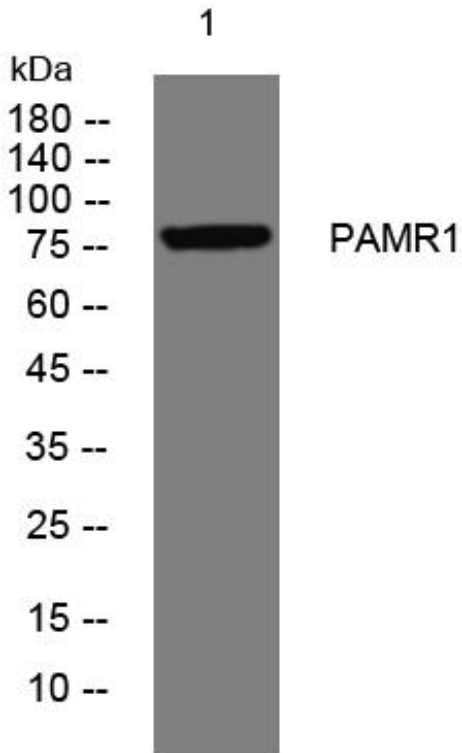
PAMR1 mouse mAb

| | |
|---------------------------|---|
| Catalog No | BYmab-11797 |
| Isotype | IgG |
| Reactivity | Human; Mouse |
| Applications | WB |
| Gene Name | PAMR1 RAMP FP938 UNQ699/PRO1344 |
| Protein Name | PAMR1 |
| Immunogen | Synthesized peptide derived from human PAMR1 AA range: 57-107 |
| Specificity | This antibody detects endogenous levels of PAMR1 at Human/Mouse |
| Formulation | Liquid in PBS containing 50% glycerol, 0.5% BSA and 0.02% sodium azide. |
| Source | Monoclonal, Mouse,IgG |
| Purification | The antibody was affinity-purified from mouse antiserum by affinity-chromatography using epitope-specific immunogen. |
| Dilution | WB 1:500-2000 |
| Concentration | 1 mg/ml |
| Purity | ≥90% |
| Storage Stability | -20°C/1 year |
| Synonyms | |
| Observed Band | 79kD |
| Cell Pathway | Secreted . |
| Tissue Specificity | |
| Function | |
| Background | |
| matters needing attention | Avoid repeated freezing and thawing! |
| Usage suggestions | This product can be used in immunological reaction related experiments. For more information, please consult technical personnel. |

Nanjing BYabscience technology Co.,Ltd



Products Images



Western Blot analysis of various cells using PAMR1 mouse mAb

Nanjing BYabs science technology Co.,Ltd

网址: www.njbybio.com

官方热线: 025-5229-8998

监督电话: 15950492658