



# KR131 mouse mAb

<b>Catalog No</b>	BYmab-11785
<b>Isotype</b>	IgG
<b>Reactivity</b>	Human;Rat;Mouse;
<b>Applications</b>	WB
<b>Gene Name</b>	KRTAP13-1 KAP13.1 KRTAP13.1
<b>Protein Name</b>	KR131
<b>Immunogen</b>	Synthesized peptide derived from human KR131 AA range: 99-149
<b>Specificity</b>	This antibody detects endogenous levels of KR131 at Human
<b>Formulation</b>	Liquid in PBS containing 50% glycerol, 0.5% BSA and 0.02% sodium azide.
<b>Source</b>	Monoclonal, Mouse,IgG
<b>Purification</b>	The antibody was affinity-purified from mouse antiserum by affinity-chromatography using epitope-specific immunogen.
<b>Dilution</b>	WB 1:500-2000
<b>Concentration</b>	1 mg/ml
<b>Purity</b>	≥90%
<b>Storage Stability</b>	-20°C/1 year
<b>Synonyms</b>	
<b>Observed Band</b>	
<b>Cell Pathway</b>	intermediate filament,
<b>Tissue Specificity</b>	Weak expression seen in the late matrix and entire cortex area of the hair follicle.
<b>Function</b>	caution:The sequence of 1-41 of PubMed:12359730 has not been submitted.,function:In the hair cortex, hair keratin intermediate filaments are embedded in an interfilamentous matrix, consisting of hair keratin-associated proteins (KRTAP), which are essential for the formation of a rigid and resistant hair shaft through their extensive disulfide bond cross-linking with abundant cysteine residues of hair keratins. The matrix proteins include the high-sulfur and high-glycine-tyrosine keratins.,similarity:Belongs to the PMG family.,subunit:Interacts with hair keratins.,tissue specificity:Weak expression seen in the late matrix and entire cortex area of the hair follicle.,
<b>Background</b>	Hair keratins and hair keratin-associated proteins (KAPs), such as KRTAP13-1, are the main structural proteins of hair fibers (Rogers et al., 2002 [PubMed

**Nanjing BYabscience technology Co.,Ltd**



12359730]).[supplied by OMIM, Mar 2008],

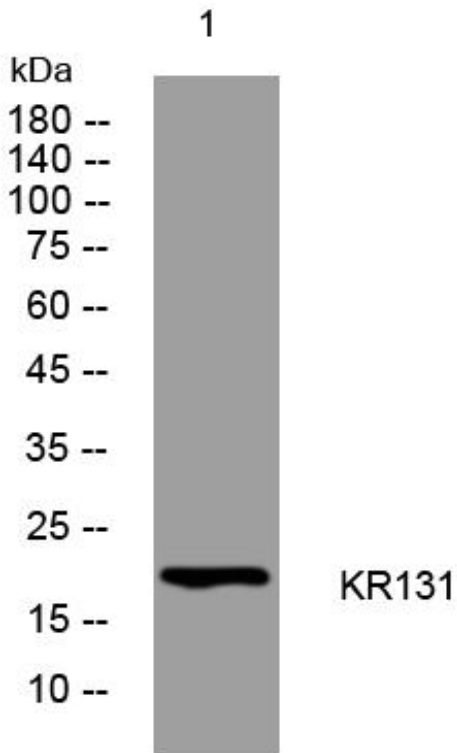
**matters needing attention**

Avoid repeated freezing and thawing!

**Usage suggestions**

This product can be used in immunological reaction related experiments. For more information, please consult technical personnel.

## Products Images



Western Blot analysis of various cells using KR131 mouse mAb

Nanjing BYabscience technology Co.,Ltd

网址: [www.njbybio.com](http://www.njbybio.com)

官方热线: 025-5229-8998

监督电话: 15950492658