



# SRRT mouse mAb

Catalog No	BYmab-11771
Isotype	IgG
Reactivity	Human; Mouse
Applications	WB
Gene Name	SRRT ARS2 ASR2
Protein Name	SRRT
Immunogen	Synthesized peptide derived from human SRRT AA range: 403-453
Specificity	This antibody detects endogenous levels of SRRT at Human/Mouse
Formulation	Liquid in PBS containing 50% glycerol, 0.5% BSA and 0.02% sodium azide.
Source	Monoclonal, Mouse,IgG
Purification	The antibody was affinity-purified from mouse antiserum by affinity-chromatography using epitope-specific immunogen.
Dilution	WB 1:500-2000
Concentration	1 mg/ml
Purity	≥90%
Storage Stability	-20°C/1 year
Synonyms	
Observed Band	
Cell Pathway	Nucleus, nucleoplasm . Cytoplasm . Predominantly nuclear. Shuttles between the nucleus and the cytoplasm in a CRM1-dependent way (By similarity). .
Tissue Specificity	Ubiquitously expressed.
Function	function:Confers arsenite resistance.,similarity:Belongs to the ARS2 family.,
Background	
matters needing attention	Avoid repeated freezing and thawing!
Usage suggestions	This product can be used in immunological reaction related experiments. For more information, please consult technical personnel.

Nanjing BYabscience technology Co.,Ltd

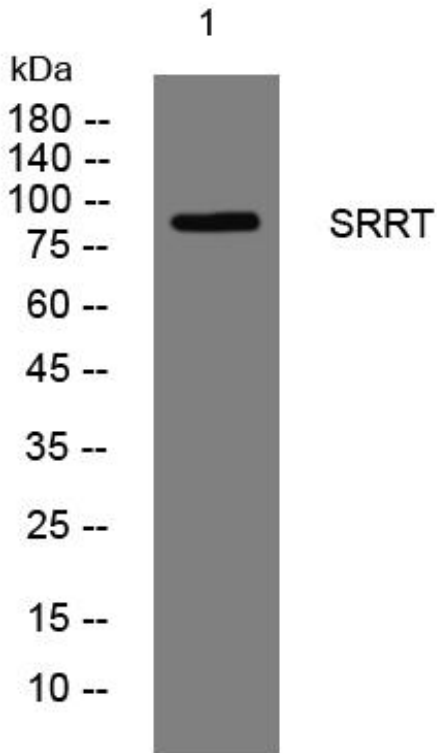
网址: [www.njbybio.com](http://www.njbybio.com)

官方热线: 025-5229-8998

监督电话: 15950492658



## Products Images



Western Blot analysis of various cells using SRRT mouse mAb

Nanjing BYabs science technology Co.,Ltd

网址: [www.njbybio.com](http://www.njbybio.com)

官方热线: 025-5229-8998

监督电话: 15950492658