



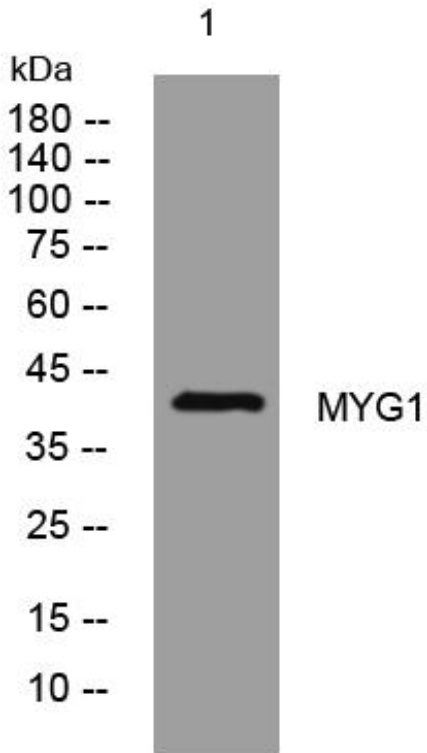
MYG1 mouse mAb

Catalog No	BYmab-11768
Isotype	IgG
Reactivity	Human; Mouse;Rat
Applications	WB
Gene Name	C12orf10
Protein Name	MYG1
Immunogen	Synthesized peptide derived from human MYG1 AA range: 296-346
Specificity	This antibody detects endogenous levels of MYG1 at Human/Mouse/Rat
Formulation	Liquid in PBS containing 50% glycerol, 0.5% BSA and 0.02% sodium azide.
Source	Monoclonal, Mouse,IgG
Purification	The antibody was affinity-purified from mouse antiserum by affinity-chromatography using epitope-specific immunogen.
Dilution	WB 1:500-2000
Concentration	1 mg/ml
Purity	≥90%
Storage Stability	-20°C/1 year
Synonyms	
Observed Band	
Cell Pathway	Nucleus, nucleoplasm . Mitochondrion matrix . Nucleus, nucleolus .
Tissue Specificity	Ubiquitously expressed, with highest levels in testis.
Function	similarity:Belongs to the UPF0160 (MYG1) family.,tissue specificity:Ubiquitously expressed, with highest levels in testis.,
Background	
matters needing attention	Avoid repeated freezing and thawing!
Usage suggestions	This product can be used in immunological reaction related experiments. For more information, please consult technical personnel.

Nanjing BYabscience technology Co.,Ltd



Products Images



Western Blot analysis of various cells using MYG1 mouse mAb