



ZFYV1 mouse mAb

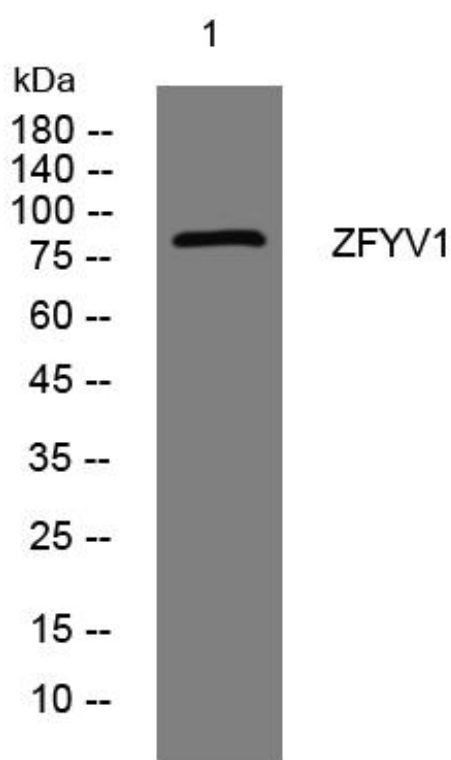
| | |
|---------------------------|--|
| Catalog No | BYmab-11766 |
| Isotype | IgG |
| Reactivity | Human; Mouse |
| Applications | WB |
| Gene Name | ZFYVE1 DFCP1 KIAA1589 TAFF1 ZNFN2A1 PP10436 |
| Protein Name | ZFYV1 |
| Immunogen | Synthesized peptide derived from human ZFYV1 AA range: 318-368 |
| Specificity | This antibody detects endogenous levels of ZFYV1 at Human/Mouse |
| Formulation | Liquid in PBS containing 50% glycerol, 0.5% BSA and 0.02% sodium azide. |
| Source | Monoclonal, Mouse,IgG |
| Purification | The antibody was affinity-purified from mouse antiserum by affinity-chromatography using epitope-specific immunogen. |
| Dilution | WB 1:500-2000 |
| Concentration | 1 mg/ml |
| Purity | ≥90% |
| Storage Stability | -20°C/1 year |
| Synonyms | |
| Observed Band | |
| Cell Pathway | Golgi apparatus, Golgi stack . Golgi apparatus . Endoplasmic reticulum . Lipid droplet . Preautophagosomal structure . Mitochondrion . Resides predominantly in the cisternal stacks of the Golgi (PubMed:11256955). Colocalizes with TRIM13 on the perinuclear endoplasmic reticulum (PubMed:22178386). During starvation conditions, localizes to omegasomes which are endoplasmic reticulum connected strutures at the origin of preautophagosomal structures (PubMed:31293035, PubMed:25876663). Localizes to lipid droplets in the presence of oleic acid (PubMed:31293035, PubMed:30970241). . |
| Tissue Specificity | [Isoform 2]: Highly expressed in heart. Also detected in the testis. ; [Isoform 1]: Expressed in all tissues examined, including, brain, placenta, lung, liver, skeletal muscle, pancreas and kidney. Highly expressed in heart. |
| Function | sequence caution:Translated as Trp.,similarity:Contains 2 FYVE-type zinc fingers.,subcellular location:Resides predominantly in the cisternal stacks of the Golgi.,subunit:Binds to phosphatidylinositol-3-phosphate (PtdIns3P) through its FYVE-type zinc finger.,tissue specificity:Isoform 1 was expressed in all tissues |

Nanjing BYabscience technology Co.,Ltd



| | |
|----------------------------------|--|
| | examined, including, brain, placenta, lung, liver, skeletal muscle, pancreas and kidney. Both isoforms, 1 and 2 showed a high expression in heart. Isoform 2 is also detected in the testis., |
| Background | The FYVE domain mediates the recruitment of proteins involved in membrane trafficking and cell signaling to phosphatidylinositol 3-phosphate-containing membranes. This protein contains two zinc-binding FYVE domains in tandem and is reported to localize to the Golgi apparatus. Alternative splicing results in multiple transcript variants. [provided by RefSeq, Aug 2013], |
| matters needing attention | Avoid repeated freezing and thawing! |
| Usage suggestions | This product can be used in immunological reaction related experiments. For more information, please consult technical personnel. |

Products Images



Western Blot analysis of various cells using ZFYV1 mouse mAb