



NIT1 mouse mAb

Catalog No	BYmab-11754
Isotype	IgG
Reactivity	Human; Mouse;Rat
Applications	WB
Gene Name	NIT1
Protein Name	NIT1
Immunogen	Synthesized peptide derived from human NIT1 AA range: 32-82
Specificity	This antibody detects endogenous levels of NIT1 at Human/Mouse/Rat
Formulation	Liquid in PBS containing 50% glycerol, 0.5% BSA and 0.02% sodium azide.
Source	Monoclonal, Mouse,IgG
Purification	The antibody was affinity-purified from mouse antiserum by affinity-chromatography using epitope-specific immunogen.
Dilution	WB 1:500-2000
Concentration	1 mg/ml
Purity	≥90%
Storage Stability	-20°C/1 year
Synonyms	
Observed Band	
Cell Pathway	[Isoform 2]: Mitochondrion .; [Isoform 1]: Cytoplasm .
Tissue Specificity	Detected in heart, brain, placenta, liver, skeletal muscle, kidney and pancreas.
Function	sequence caution:Chimeric cDNA. Its C-terminal exon is derived from the last exon of the DEDD gene.,similarity:Belongs to the UPF0012 family.,similarity:Contains 1 CN hydrolase domain.,tissue specificity:Detected in heart, brain, placenta, liver, skeletal muscle, kidney and pancreas.,
Background	This gene encodes a member of the nitrilase protein family with homology to bacterial and plant nitrilases, enzymes that cleave nitriles and organic amides to the corresponding carboxylic acids plus ammonia. Multiple transcript variants encoding different isoforms have been found for this gene. [provided by RefSeq, Jun 2010],

Nanjing BYabscience technology Co.,Ltd



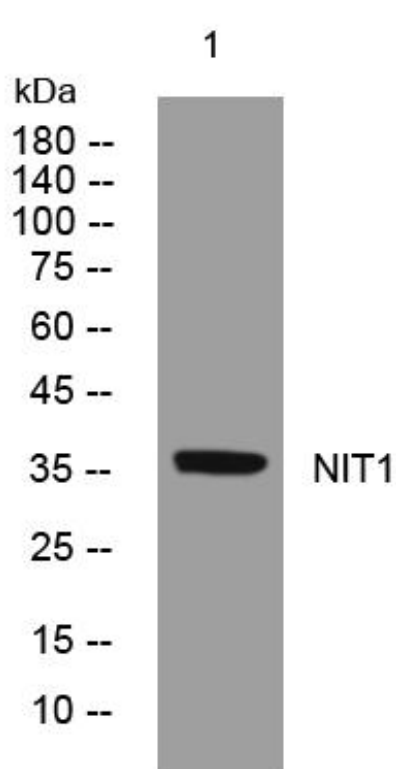
matters needing attention

Avoid repeated freezing and thawing!

Usage suggestions

This product can be used in immunological reaction related experiments. For more information, please consult technical personnel.

Products Images



Western Blot analysis of various cells using NIT1 mouse mAb