



FPGT mouse mAb

Catalog No	BYmab-11747
Isotype	IgG
Reactivity	Human;Rat;Mouse;
Applications	WB
Gene Name	FPGT GFPP
Protein Name	FPGT
Immunogen	Synthesized peptide derived from human FPGT AA range: 497-547
Specificity	This antibody detects endogenous levels of FPGT at Human
Formulation	Liquid in PBS containing 50% glycerol, 0.5% BSA and 0.02% sodium azide.
Source	Monoclonal, Mouse,IgG
Purification	The antibody was affinity-purified from mouse antiserum by affinity-chromatography using epitope-specific immunogen.
Dilution	WB 1:500-2000
Concentration	1 mg/ml
Purity	≥90%
Storage Stability	-20°C/1 year
Synonyms	
Observed Band	
Cell Pathway	Cytoplasm.
Tissue Specificity	Expressed in many tissues.
Function	catalytic activity:ATP + a protein = ADP + a phosphoprotein.,catalytic activity:GTP + beta-L-fucose 1-phosphate = diphosphate + GDP-L-fucose.,cofactor:Magnesium.,function:Catalyzes the formation of GDP-L-fucose from GTP and L-fucose-1-phosphate. Functions as a salvage pathway to reutilize L-fucose arising from the turnover of glycoproteins and glycolipids.,function:May play a role in cardiac physiology.,PTM:Autophosphorylated.,similarity:Belongs to the protein kinase superfamily. TKL Ser/Thr protein kinase family. MAP kinase kinase subfamily.,similarity:Contains 1 protein kinase domain.,similarity:Contains 10 ANK repeats.,subcellular location:Expressed at lower levels in the cytoplasm.,subunit:Interacts with TNNI3, ACTC, ACTA1, MYBPC3, AIP, BABP3 and HADHB.,tissue specificity:Expressed in many tissues.,tissue

Nanjing BYabscience technology Co.,Ltd



specificity: Highly expressed in both adult and fetal heart.,

Background

L-fucose is a key sugar in glycoproteins and other complex carbohydrates since it may be involved in many of the functional roles of these macromolecules, such as in cell-cell recognition. The fucosyl donor for these fucosylated oligosaccharides is GDP-beta-L-fucose. There are two alternate pathways for the biosynthesis of GDP-fucose; the major pathway converts GDP-alpha-D-mannose to GDP-beta-L-fucose. The protein encoded by this gene participates in an alternate pathway that is present in certain mammalian tissues, such as liver and kidney, and appears to function as a salvage pathway to reutilize L-fucose arising from the turnover of glycoproteins and glycolipids. This pathway involves the phosphorylation of L-fucose to form beta-L-fucose-1-phosphate, and then condensation of the beta-L-fucose-1-phosphate with GTP by fucose-1-phosphate guanylyltransferase to form GDP-beta-L-fucose. Alternative splicing results in multiple transcript variants. Read-through transcription also exists between this gene and the neighboring downstream TNNI3 interacting kinase (TNNI3K) gene. [provided by RefSeq, Dec 2010],

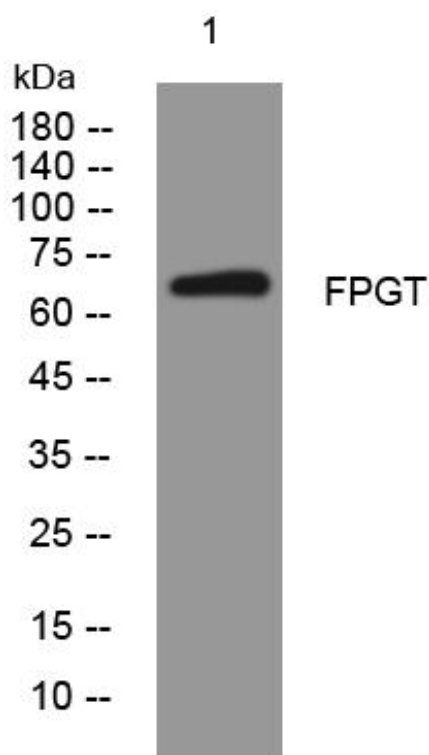
matters needing attention

Avoid repeated freezing and thawing!

Usage suggestions

This product can be used in immunological reaction related experiments. For more information, please consult technical personnel.

Products Images



Western Blot analysis of various cells using FPGT mouse mAb

Nanjing BYabs science technology Co.,Ltd

网址: www.njbybio.com

官方热线: 025-5229-8998

监督电话: 15950492658