



KCTD5 mouse mAb

Catalog No	BYmab-11743
Isotype	IgG
Reactivity	Human; Mouse;Rat
Applications	WB
Gene Name	KCTD5
Protein Name	KCTD5
Immunogen	Synthesized peptide derived from human KCTD5 AA range: 170-220
Specificity	This antibody detects endogenous levels of KCTD5 at Human/Mouse/Rat
Formulation	Liquid in PBS containing 50% glycerol, 0.5% BSA and 0.02% sodium azide.
Source	Monoclonal, Mouse,IgG
Purification	The antibody was affinity-purified from mouse antiserum by affinity-chromatography using epitope-specific immunogen.
Dilution	WB 1:500-2000
Concentration	1 mg/ml
Purity	≥90%
Storage Stability	-20°C/1 year
Synonyms	
Observed Band	
Cell Pathway	Cytoplasm, cytosol . Cytoplasm . Nucleus. Predominantly cytoplasmic, translocated to the nucleus upon interaction with Rep proteins. .
Tissue Specificity	
Function	similarity:Contains 1 BTB (POZ) domain.,subcellular location:Predominantly cytoplasmic, translocated to the nucleus upon interaction with Rep proteins.,subunit:Interacts with adeno-associated virus 2 REP proteins.,
Background	
matters needing attention	Avoid repeated freezing and thawing!

Nanjing BYabscience technology Co.,Ltd

网址: www.njbybio.com

官方热线: 025-5229-8998

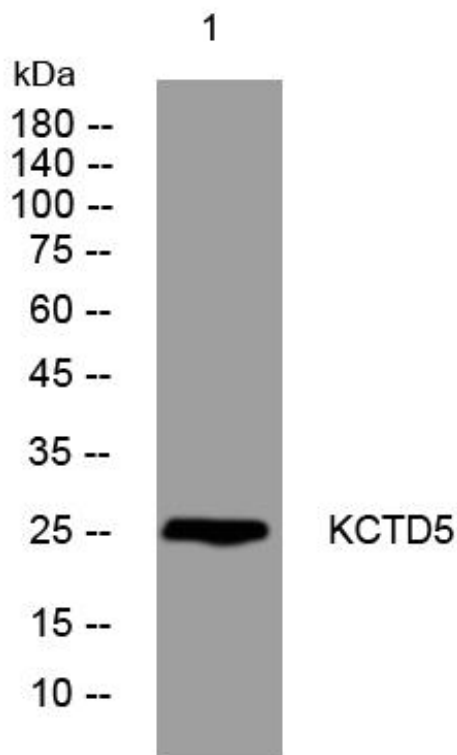
监督电话: 15950492658



Usage suggestions

This product can be used in immunological reaction related experiments. For more information, please consult technical personnel.

Products Images



Western Blot analysis of various cells using KCTD5 mouse mAb

Nanjing BYabs science technology Co.,Ltd

网址: www.njbybio.com

官方热线: 025-5229-8998

监督电话: 15950492658