



# F200A mouse mAb

Catalog No	BYmab-11720
Isotype	IgG
Reactivity	Human;Rat;Mouse;
Applications	WB
Gene Name	FAM200A C7orf38
Protein Name	F200A
Immunogen	Synthesized peptide derived from human F200A AA range: 358-408
Specificity	This antibody detects endogenous levels of F200A at Human
Formulation	Liquid in PBS containing 50% glycerol, 0.5% BSA and 0.02% sodium azide.
Source	Monoclonal, Mouse,IgG
Purification	The antibody was affinity-purified from mouse antiserum by affinity-chromatography using epitope-specific immunogen.
Dilution	WB 1:500-2000
Concentration	1 mg/ml
Purity	≥90%
Storage Stability	-20°C/1 year
Synonyms	
Observed Band	
Cell Pathway	Membrane ; Single-pass membrane protein .
Tissue Specificity	
Function	
Background	This gene encodes a protein of unknown function. The protein is weakly similar to transposase-like proteins in human and mouse. [provided by RefSeq, Jul 2008],
matters needing attention	Avoid repeated freezing and thawing!
Usage suggestions	This product can be used in immunological reaction related experiments. For more information, please consult technical personnel.

Nanjing BYabscience technology Co.,Ltd

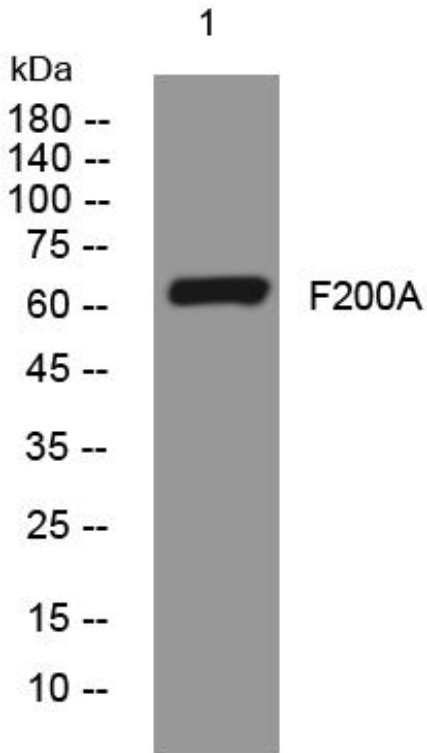
网址: [www.njbybio.com](http://www.njbybio.com)

官方热线: 025-5229-8998

监督电话: 15950492658



## Products Images



Western Blot analysis of various cells using F200A mouse mAb