



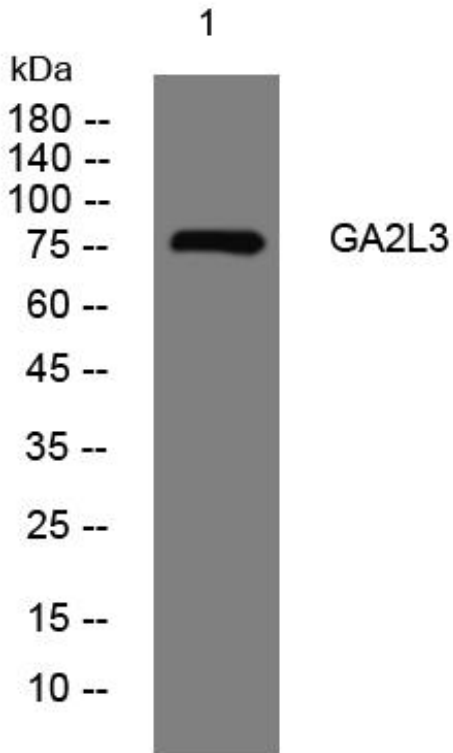
# GA2L3 mouse mAb

Catalog No	BYmab-11699
Isotype	IgG
Reactivity	Human; Mouse
Applications	WB
Gene Name	GAS2L3
Protein Name	GA2L3
Immunogen	Synthesized peptide derived from human GA2L3 AA range: 262-312
Specificity	This antibody detects endogenous levels of GA2L3 at Human/Mouse
Formulation	Liquid in PBS containing 50% glycerol, 0.5% BSA and 0.02% sodium azide.
Source	Monoclonal, Mouse,IgG
Purification	The antibody was affinity-purified from mouse antiserum by affinity-chromatography using epitope-specific immunogen.
Dilution	WB 1:500-2000
Concentration	1 mg/ml
Purity	≥90%
Storage Stability	-20°C/1 year
Synonyms	
Observed Band	
Cell Pathway	Cytoplasm . Cytoplasm, cytoskeleton . Localizes to microtubule and actin cytoskeletons. .
Tissue Specificity	Expressed in the pancreas, heart, liver, placenta, brain, skeletal muscle, kidney and lung.
Function	similarity:Belongs to the GAS2 family.,similarity:Contains 1 CH (calponin-homology) domain.,
Background	
matters needing attention	Avoid repeated freezing and thawing!
Usage suggestions	This product can be used in immunological reaction related experiments. For more information, please consult technical personnel.

Nanjing BYabscience technology Co.,Ltd



## Products Images



Western Blot analysis of various cells using GA2L3 mouse mAb