



AT134 mouse mAb

Catalog No	BYmab-11696
Isotype	IgG
Reactivity	Human; Mouse
Applications	WB
Gene Name	ATP13A4 UNQ3052/PRO9871
Protein Name	AT134
Immunogen	Synthesized peptide derived from human AT134 AA range: 719-769
Specificity	This antibody detects endogenous levels of AT134 at Human/Mouse
Formulation	Liquid in PBS containing 50% glycerol, 0.5% BSA and 0.02% sodium azide.
Source	Monoclonal, Mouse,IgG
Purification	The antibody was affinity-purified from mouse antiserum by affinity-chromatography using epitope-specific immunogen.
Dilution	WB 1:500-2000
Concentration	1 mg/ml
Purity	≥90%
Storage Stability	-20°C/1 year
Synonyms	
Observed Band	
Cell Pathway	Early endosome membrane ; Multi-pass membrane protein . Late endosome membrane ; Multi-pass membrane protein . Recycling endosome membrane ; Multi-pass membrane protein .
Tissue Specificity	Expressed in heart, placenta, liver, skeletal muscles, and pancreas. Lower levels of expression are also detected in brain, lung and kidney. Weakly expressed in the adult brain. Expression in fetal brain is higher than in adult brain, with levels similar to several other fetal tissues including spleen and skeletal muscle. In adult brain expressed at low levels in all tissues examined, including the temporal lobe and putamen (PubMed:15925480). Highly expressed in the respiratory and integumentary systems (PubMed:29505581).
Function	catalytic activity:ATP + H(2)O = ADP + phosphate.,disease:A chromosomal aberration involving ATP13A4 is found in 2 patients with specific language impairment (SLI) disorders. Paracentric inversion inv(3)(q25;q29). The inversion produces a disruption of the protein.,induction:Decreased by half in the SLI patient lymphoblasts.,sequence caution:Wrong choice of CDS.,similarity:Belongs

Nanjing BYabscience technology Co.,Ltd



to the cation transport ATPase (P-type) family.,similarity:Belongs to the cation transport ATPase (P-type) family. Type V subfamily.,tissue specificity:Expressed in heart, placenta, liver, skeletal muscles, and pancreas. Lower levels of expression are also detected in brain, lung and kidney. Weakly expressed in the adult brain. Expression in fetal brain is higher than in adult brain, with levels similar to several other fetal tissues including spleen and skeletal muscle. In adult brain expressed at low levels i

Background

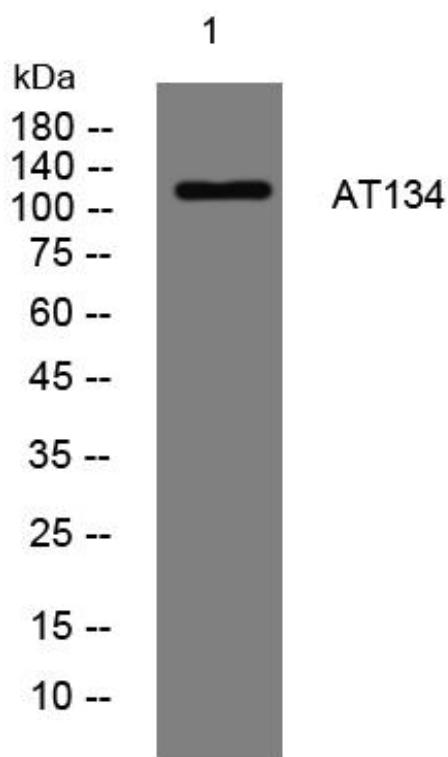
matters needing attention

Avoid repeated freezing and thawing!

Usage suggestions

This product can be used in immunological reaction related experiments. For more information, please consult technical personnel.

Products Images



Western Blot analysis of various cells using AT134 mouse mAb

Nanjing BYabscience technology Co.,Ltd

网址: www.njbybio.com

官方热线: 025-5229-8998

监督电话: 15950492658