



CP089 mouse mAb

Catalog No	BYmab-11682
Isotype	IgG
Reactivity	Human; Mouse
Applications	WB
Gene Name	C16orf89 UNQ904/PRO1925
Protein Name	CP089
Immunogen	Synthesized peptide derived from human CP089 AA range: 226-276
Specificity	This antibody detects endogenous levels of CP089 at Human/Mouse
Formulation	Liquid in PBS containing 50% glycerol, 0.5% BSA and 0.02% sodium azide.
Source	Monoclonal, Mouse,IgG
Purification	The antibody was affinity-purified from mouse antiserum by affinity-chromatography using epitope-specific immunogen.
Dilution	WB 1:500-2000
Concentration	1 mg/ml
Purity	≥90%
Storage Stability	-20°C/1 year
Synonyms	
Observed Band	
Cell Pathway	Secreted .
Tissue Specificity	Predominantly expressed in thyroid tissue.
Function	
Background	This gene is expressed predominantly in the thyroid. Based on expression patterns similar to thyroid transcription factors and proteins, this gene may function in the development and function of the thyroid. Multiple transcript variants encoding different isoforms have been found for this gene. [provided by RefSeq, Oct 2011],
matters needing attention	Avoid repeated freezing and thawing!

Nanjing BYabscience technology Co.,Ltd

网址: www.njbybio.com

官方热线: 025-5229-8998

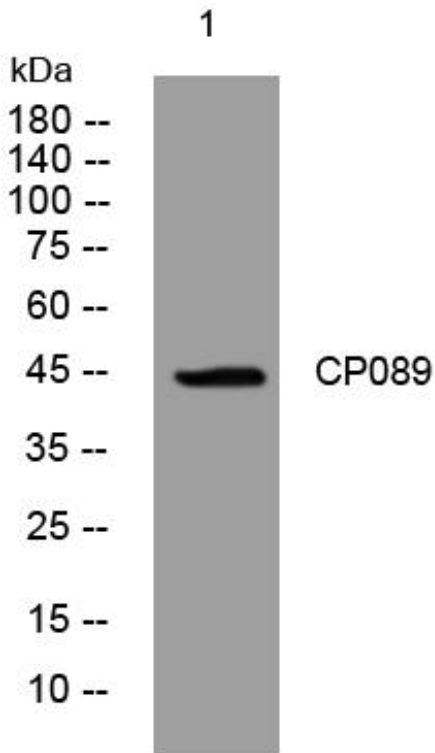
监督电话: 15950492658



Usage suggestions

This product can be used in immunological reaction related experiments. For more information, please consult technical personnel.

Products Images



Western Blot analysis of various cells using CP089 mouse mAb

Nanjing BYabs science technology Co.,Ltd

网址: www.njbybio.com

官方热线: 025-5229-8998

监督电话: 15950492658