



UBP25 mouse mAb

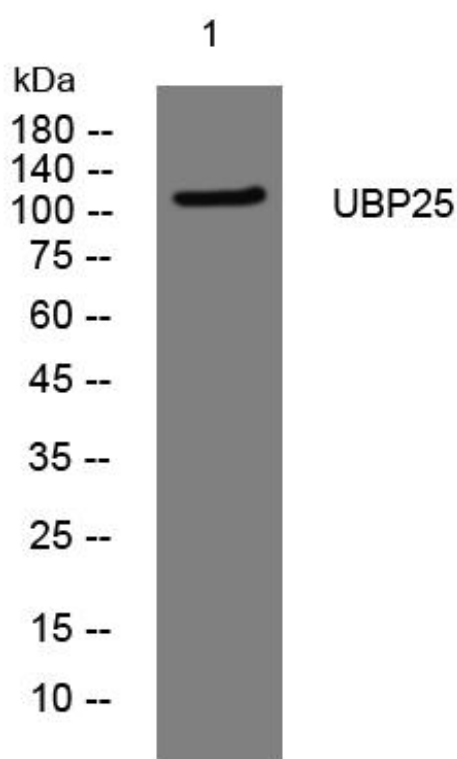
Catalog No	BYmab-11672
Isotype	IgG
Reactivity	Human; Mouse
Applications	WB
Gene Name	USP25 USP21
Protein Name	UBP25
Immunogen	Synthesized peptide derived from human UB25 AA range: 883-933
Specificity	This antibody detects endogenous levels of UB25 at Human/Mouse
Formulation	Liquid in PBS containing 50% glycerol, 0.5% BSA and 0.02% sodium azide.
Source	Monoclonal, Mouse,IgG
Purification	The antibody was affinity-purified from mouse antiserum by affinity-chromatography using epitope-specific immunogen.
Dilution	WB 1:500-2000
Concentration	1 mg/ml
Purity	≥90%
Storage Stability	-20°C/1 year
Synonyms	
Observed Band	
Cell Pathway	Cytoplasm .; [Isoform USP25m]: Cytoplasm . Nucleus . Some transient punctuate nuclear location in myotubes during myocyte development. .
Tissue Specificity	Isoform USP25a is found in most adult and fetal tissues; expression is moderately high in testis, pancreas, kidney, skeletal muscle, liver, lung, placenta, brain, heart, but very low in peripheral blood, colon, small intestine, ovary, prostate, thymus and spleen. Isoform USP25b is found in all tissues except heart and skeletal muscle. Isoform USP25m is heart and skeletal muscle specific.
Function	catalytic activity:Ubiquitin C-terminal thioester + H(2)O = ubiquitin + a thiol.,function:Involved in the ubiquitin-dependent proteolytic pathway in conjunction with the 26S proteasome.,similarity:Belongs to the peptidase C19 family.,similarity:Contains 2 UIM (ubiquitin-interacting motif) repeats.,tissue specificity:Found in most adult and fetal tissues; expression is moderately high in testis, pancreas, kidney, skeletal muscle, liver, lung, placenta, brain, heart, but very low in peripheral blood, colon, small intestine, ovary, prostate, thymus and spleen.,

Nanjing BYabscience technology Co.,Ltd



Background	Ubiquitin (MIM 191339) is a highly conserved 76-amino acid protein involved in regulation of intracellular protein breakdown, cell cycle regulation, and stress response. Ubiquitin is released from degraded proteins by disassembly of the polyubiquitin chains, which is mediated by ubiquitin-specific proteases (USPs), such as USP25 (Valero et al., 1999 [PubMed 10644437]).[supplied by OMIM, Mar 2008],
matters needing attention	Avoid repeated freezing and thawing!
Usage suggestions	This product can be used in immunological reaction related experiments. For more information, please consult technical personnel.

Products Images



Western Blot analysis of various cells using UBP25 mouse mAb