



SAMD1 mouse mAb

Catalog No	BYmab-11664
Isotype	IgG
Reactivity	Human; Mouse
Applications	WB
Gene Name	SAMD1
Protein Name	SAMD1
Immunogen	Synthesized peptide derived from human SAMD1 AA range: 418-468
Specificity	This antibody detects endogenous levels of SAMD1 at Human/Mouse
Formulation	Liquid in PBS containing 50% glycerol, 0.5% BSA and 0.02% sodium azide.
Source	Monoclonal, Mouse,IgG
Purification	The antibody was affinity-purified from mouse antiserum by affinity-chromatography using epitope-specific immunogen.
Dilution	WB 1:500-2000
Concentration	1 mg/ml
Purity	≥90%
Storage Stability	-20°C/1 year
Synonyms	
Observed Band	
Cell Pathway	Nucleus . Chromosome . Secreted . In atherosclerotic lesions, it is found in the extracellular compartment and in foam cells cytoplasm. .
Tissue Specificity	Expressed in atherosclerotic lesions, not in normal intima. Expressed in foam cells.
Function	function:May play a role in atherogenesis by immobilizing LDL in the atherial wall.,similarity:Contains 1 SAM (sterile alpha motif) domain.,tissue specificity:Expressed in atherosclerotic lesions, not in normal intima.,
Background	
matters needing attention	Avoid repeated freezing and thawing!

Nanjing BYabscience technology Co.,Ltd

网址: www.njbybio.com

官方热线: 025-5229-8998

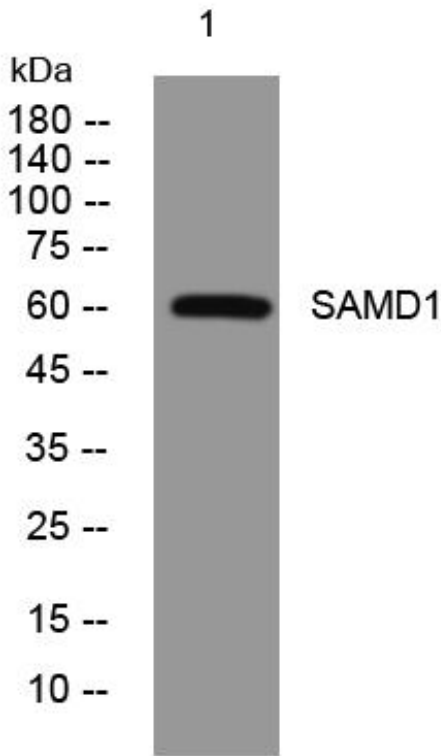
监督电话: 15950492658



Usage suggestions

This product can be used in immunological reaction related experiments. For more information, please consult technical personnel.

Products Images



Western Blot analysis of various cells using SAMD1 mouse mAb

Nanjing BYabs science technology Co.,Ltd

网址: www.njbybio.com

官方热线: 025-5229-8998

监督电话: 15950492658