



R3HD1 mouse mAb

Catalog No	BYmab-11658
Isotype	IgG
Reactivity	Human;Rat;Mouse;
Applications	WB
Gene Name	R3HDM1 KIAA0029 R3HDM
Protein Name	R3HD1
Immunogen	Synthesized peptide derived from human R3HD1 AA range: 327-377
Specificity	This antibody detects endogenous levels of R3HD1 at Human
Formulation	Liquid in PBS containing 50% glycerol, 0.5% BSA and 0.02% sodium azide.
Source	Monoclonal, Mouse,IgG
Purification	The antibody was affinity-purified from mouse antiserum by affinity-chromatography using epitope-specific immunogen.
Dilution	WB 1:500-2000
Concentration	1 mg/ml
Purity	≥90%
Storage Stability	-20°C/1 year
Synonyms	
Observed Band	
Cell Pathway	
Tissue Specificity	
Function	similarity:Contains 1 R3H domain.,
Background	
matters needing attention	Avoid repeated freezing and thawing!
Usage suggestions	This product can be used in immunological reaction related experiments. For more information, please consult technical personnel.

Nanjing BYabscience technology Co.,Ltd

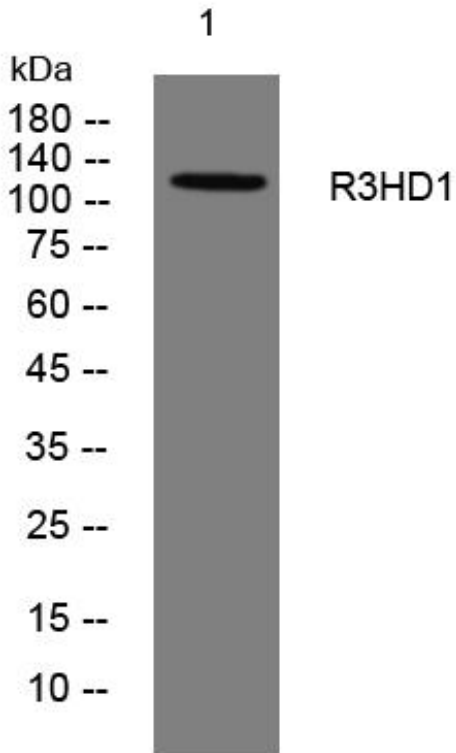
网址: www.njbybio.com

官方热线: 025-5229-8998

监督电话: 15950492658



Products Images



Western Blot analysis of various cells using R3HD1 mouse mAb