



DJC11 mouse mAb

Catalog No	BYmab-11654
Isotype	IgG
Reactivity	Human; Mouse
Applications	WB
Gene Name	DNAJC11
Protein Name	DJC11
Immunogen	Synthesized peptide derived from human DJC11 AA range: 206-256
Specificity	This antibody detects endogenous levels of DJC11 at Human/Mouse
Formulation	Liquid in PBS containing 50% glycerol, 0.5% BSA and 0.02% sodium azide.
Source	Monoclonal, Mouse,IgG
Purification	The antibody was affinity-purified from mouse antiserum by affinity-chromatography using epitope-specific immunogen.
Dilution	WB 1:500-2000
Concentration	1 mg/ml
Purity	≥90%
Storage Stability	-20°C/1 year
Synonyms	
Observed Band	
Cell Pathway	Mitochondrion . Isoforms show differential submitochondrial localization. A 57 kDa form (potentially isoform 3) shows either mitochondrial matrix or innermembrane (IM) localization, possibly anchored to the IM facing the matrix. A 35 kDa form behaved either as an inner membrane space (IMS) or an IM protein exposed to the IMS. .; [Isoform 1]: Mitochondrion outer membrane ; Peripheral membrane protein .
Tissue Specificity	
Function	similarity:Belongs to the DNAJC11 family.,similarity:Contains 1 J domain.,
Background	
matters needing attention	Avoid repeated freezing and thawing!

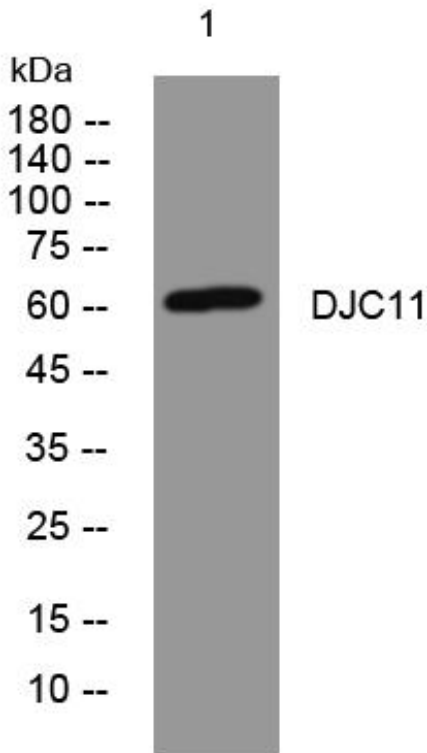
Nanjing BYabscience technology Co.,Ltd



Usage suggestions

This product can be used in immunological reaction related experiments. For more information, please consult technical personnel.

Products Images



Western Blot analysis of various cells using DJC11 mouse mAb

Nanjing BYabs science technology Co.,Ltd

网址: www.njbybio.com

官方热线: 025-5229-8998

监督电话: 15950492658