



EPAG mouse mAb

Catalog No	BYmab-11642
Isotype	IgG
Reactivity	Human;Rat;Mouse;
Applications	WB
Gene Name	EPAG
Protein Name	EPAG
Immunogen	Synthesized peptide derived from human EPAG AA range: 50-100
Specificity	This antibody detects endogenous levels of EPAG at Human
Formulation	Liquid in PBS containing 50% glycerol, 0.5% BSA and 0.02% sodium azide.
Source	Monoclonal, Mouse,IgG
Purification	The antibody was affinity-purified from mouse antiserum by affinity-chromatography using epitope-specific immunogen.
Dilution	WB 1:500-2000
Concentration	1 mg/ml
Purity	≥90%
Storage Stability	-20°C/1 year
Synonyms	
Observed Band	
Cell Pathway	
Tissue Specificity	Expressed in heart, kidney, lung, and skeletal muscle, with lower levels in pancreas and liver.
Function	function:May function as an early signal that helps mediate the activation of T cells.,tissue specificity:Expressed in heart, kidney, lung, and skeletal muscle, with lower levels in pancreas and liver.,
Background	
matters needing attention	Avoid repeated freezing and thawing!

Nanjing BYabscience technology Co.,Ltd

网址: www.njbybio.com

官方热线: 025-5229-8998

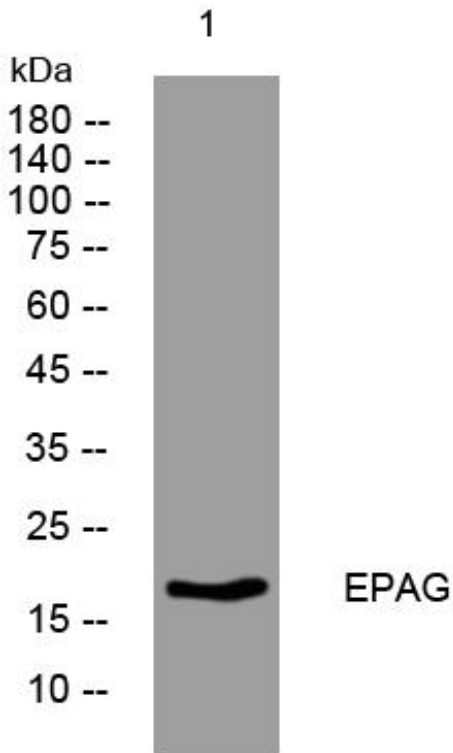
监督电话: 15950492658



Usage suggestions

This product can be used in immunological reaction related experiments. For more information, please consult technical personnel.

Products Images



Western Blot analysis of various cells using EPAG mouse mAb

Nanjing BYabs science technology Co.,Ltd

网址: www.njbybio.com

官方热线: 025-5229-8998

监督电话: 15950492658