



NPS3A mouse mAb

Catalog No	BYmab-11635
Isotype	IgG
Reactivity	Human;Rat;Mouse;
Applications	WB
Gene Name	NIPSNAP3A NIPSNAP4 HSPC299
Protein Name	NPS3A
Immunogen	Synthesized peptide derived from human NPS3A AA range: 66-116
Specificity	This antibody detects endogenous levels of NPS3A at Human
Formulation	Liquid in PBS containing 50% glycerol, 0.5% BSA and 0.02% sodium azide.
Source	Monoclonal, Mouse,IgG
Purification	The antibody was affinity-purified from mouse antiserum by affinity-chromatography using epitope-specific immunogen.
Dilution	WB 1:500-2000
Concentration	1 mg/ml
Purity	≥90%
Storage Stability	-20°C/1 year
Synonyms	
Observed Band	
Cell Pathway	Cytoplasm, cytosol . May be part of some vesicular structure distinct from lysosomal vesicles.
Tissue Specificity	Ubiquitous. Highly expressed in liver, kidney and muscle. Expressed at intermediate level in brain, heart, colon, thymus, kidney, small intestine, placenta, lung, leukocytes and spleen.
Function	similarity:Belongs to the NipSnap family.,subcellular location:May be part of some vesicular structure distinct from lysosomal vesicles.,subunit:Interacts with the Salmonella typhimurium virulence protein spiC.,tissue specificity:Ubiquitous. Highly expressed in liver, kidney and muscle. Expressed at intermediate level in brain, heart, colon, thymus, kidney, small intestine, placenta, lung, leukocytes and spleen.,
Background	NIPSNAP3A belongs to a family of proteins with putative roles in vesicular transport (Buechler et al., 2004 [PubMed 15177564]).[supplied by OMIM, Mar 2008],

Nanjing BYabscience technology Co.,Ltd



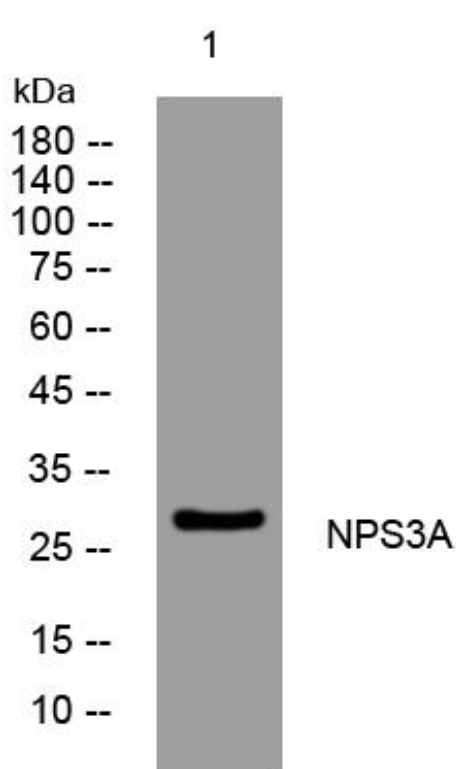
matters needing attention

Avoid repeated freezing and thawing!

Usage suggestions

This product can be used in immunological reaction related experiments. For more information, please consult technical personnel.

Products Images



Western Blot analysis of various cells using NPS3A mouse mAb