



TBCD7 mouse mAb

Catalog No	BYmab-11605
Isotype	IgG
Reactivity	Human; Mouse
Applications	WB
Gene Name	TBC1D7 HSPC239 TBC7
Protein Name	TBCD7
Immunogen	Synthesized peptide derived from human TBCD7 AA range: 85-135
Specificity	This antibody detects endogenous levels of TBCD7 at Human/Mouse
Formulation	Liquid in PBS containing 50% glycerol, 0.5% BSA and 0.02% sodium azide.
Source	Monoclonal, Mouse,IgG
Purification	The antibody was affinity-purified from mouse antiserum by affinity-chromatography using epitope-specific immunogen.
Dilution	WB 1:500-2000
Concentration	1 mg/ml
Purity	≥90%
Storage Stability	-20°C/1 year
Synonyms	
Observed Band	
Cell Pathway	Cytoplasmic vesicle . Localizes in the cytoplasmic vesicles of the endomembrane in association with TSC1-TSC2 complex.
Tissue Specificity	Highly expressed in heart, and slightly in kidney, liver and placenta.
Function	function:May act as a GTPase-activating protein for Rab family protein(s) .,similarity:Contains 1 Rab-GAP TBC domain.,
Background	This gene encodes a member of the TBC-domain containing protein family. The encoded protein functions as a subunit of the tuberous sclerosis TSC1-TSC2 complex which plays a role in the regulation of cellular growth and differentiation. Mutations in this gene have been associated with autosomal recessive megalencephaly. Alternative splicing results in multiple transcript variants. Naturally occurring readthrough transcription occurs between this locus and downstream LOC100130357. [provided by RefSeq, Jan 2016],

Nanjing BYabscience technology Co.,Ltd

网址: www.njbybio.com

官方热线: 025-5229-8998

监督电话: 15950492658



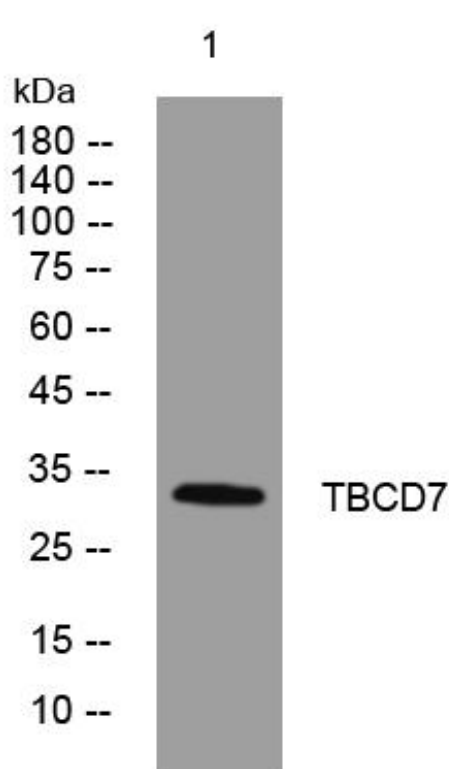
matters needing attention

Avoid repeated freezing and thawing!

Usage suggestions

This product can be used in immunological reaction related experiments. For more information, please consult technical personnel.

Products Images



Western Blot analysis of various cells using TBCD7 mouse mAb

Nanjing BYabs science technology Co.,Ltd

网址: www.njbybio.com

官方热线: 025-5229-8998

监督电话: 15950492658